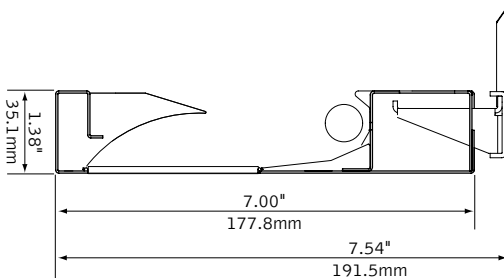


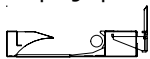


linear

DIMENSIONAL DATA

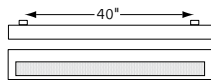


lampping options

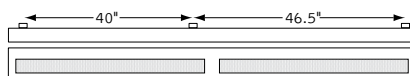


T5/T5HO LAMPS

fixture information



4' (46.5" overall length)



8' (93" overall length)

FEATURES

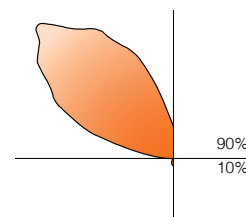
Low profile wall mount direct/indirect.

MicroGlow™ miniature prism acrylic lens produces 92% light transmission while controlling high angle brightness.

Sleek rectilinear housing only 1.4" high.

Hidden mounting bracket creates the appearance of a floating luminaire.

PERFORMANCE



PRODUCT OVERVIEW

Lumen Output: 1977-3410lm

Wattage: 33-63W

Lamping: T5, T5HO

1-Lamp T5HO

68% Efficient

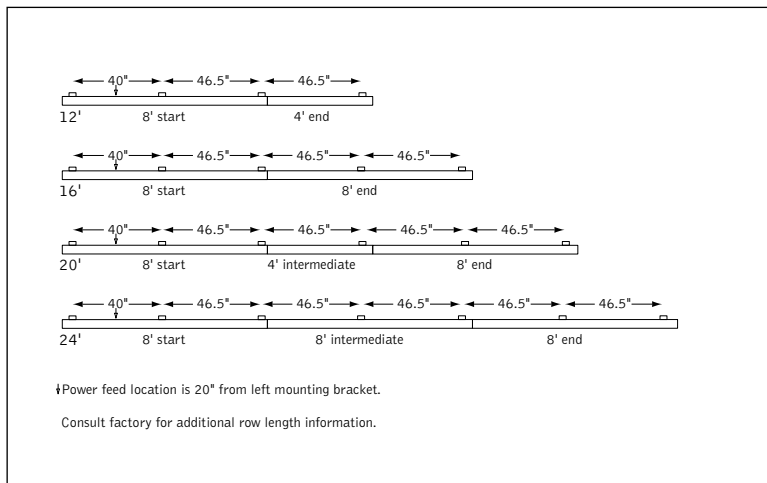
1166cd @ 135°

Visit focalpointlights.com for complete photometric data.

fixture:

project:

DETAILS



SPECIFICATIONS

Construction

One-piece 20 Ga. steel housing. 14 Ga. steel end caps mechanically attach flush to housing with concealed fasteners. For row installation, internal brackets form hairline joint. Standard lengths are available in 4' and 8'. All luminaires are provided with mounting brackets. 4' unit weight: 20 lbs., 8' unit weight: 38 lbs.

Optic

Reflector fabricated of low iridescent, semi specular premium grade aluminum. .125" thick MicroGlow™ miniature prism acrylic lens with .020" thick linear spread lens.

Electrical

Luminaires are pre-wired with factory installed branch circuit wiring and over-molded quick connects. Electronic ballasts are thermally protected and have a Class "P" rating. Optional dimming ballasts available. Optional dimming ballasts available.

Labels

UL and cUL listed.

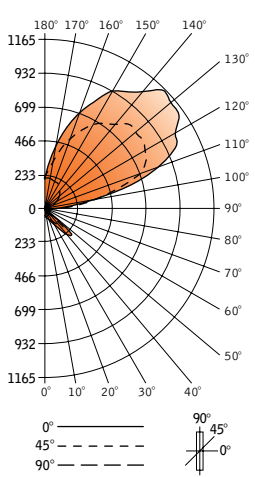
Finish

Polyester powder coat applied over a 5-stage pre-treatment. Standard luminaire housing finished in Matte Satin White or Titanium Silver. Mounting brackets, rail and J-box plate finished in Matte Satin White.

ORDERING

Fixture Series		FTWW
Twelve	FTWW	
Shielding		M1
MicroGlow	M1	
Lamping		
1 Lamp T5	1T5	
1 Lamp T5HO	1T5HO	
Circuit		1C
Single Circuit	1C	
Voltage		
120 Volt	120	
277 Volt	277	
347 Volt	347	
<small>(Consult factory for dimming options)</small>		
UNV Volt		UNV
<small>(Cannot be specified with 1T5HO dimming or EM option)</small>		
Ballast		
<small>(Consult factory for dimming availability)</small>		
Electronic Program Start <10% THD		S
		D7
Lutron 1% 3-wire		DH
Lutron 1% H-Series		DK
Mounting		WM
Wall Mount	WM	
Factory Options		
Emergency Circuit*		EC
Emergency Battery Pack*		EM
HLR/GLR Fuse		FU
Include 3000K Lamp*		L830
Include 3500K Lamp*		L835
Include 4100K Lamp*		L841
<small>(Factory installed lamps recommended)</small>		
Finish		
Titanium Silver		TS
<small>(Louver painted to match housing)</small>		
Matte White Housing		WH
Fixture Run Length		
	4'	4'
	8'	8'
	12' (8'+4')	12'
	16' (8'+8')	16'
	20' (8'+4'+8')	20'
	24' (8'+8'+8')	24'
<small>(Individual units may not be field modified for continuous row mount)</small>		

CANDLEPOWER DISTRIBUTION



Vertical Angle	Horizontal Angle					Zonal Lumens
	0°	22.5°	45°	67.5°	90°	
0°	57	57	57	57	57	
5°	54	56	56	56	56	5
15°	52	53	53	53	53	15
25°	47	49	51	51	51	24
35°	119	95	48	44	44	37
45°	260	250	185	65	33	76
55°	76	67	55	29	13	27
65°	20	19	16	9	1	7
75°	5	5	4	1	0	2
85°	0	0	0	0	0	0
90°	1	0	1	0	0	
95°	138	131	130	114	13	69
105°	583	572	534	360	47	253
115°	1006	946	774	429	83	348
125°	1139	1059	828	464	114	349
135°	1166	1069	832	470	146	307
145°	990	915	724	429	184	222
155°	824	759	598	379	203	144
165°	558	521	431	308	209	70
175°	314	303	275	239	220	21
180°	206	206	206	206	206	

LUMEN SUMMARY

Zone	Lumens	% Lamp	% Fixture
0-30°	45	1.5	2.3
0-40°	194	6.7	9.8
0-60°	1019	35.2	51.6
0-90°	1783	61.5	90.2
Total Luminaire 0-180°	1977	68.2	100.0

Go to www.focalpointlights.com for additional photometric data.