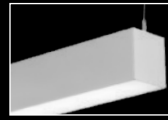


# Seem<sup>®</sup> 4

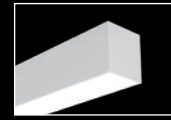
FLUORESCENT DRYWALL/HARD CEILING REGRESS LENS



FOCAL POINT<sup>®</sup>

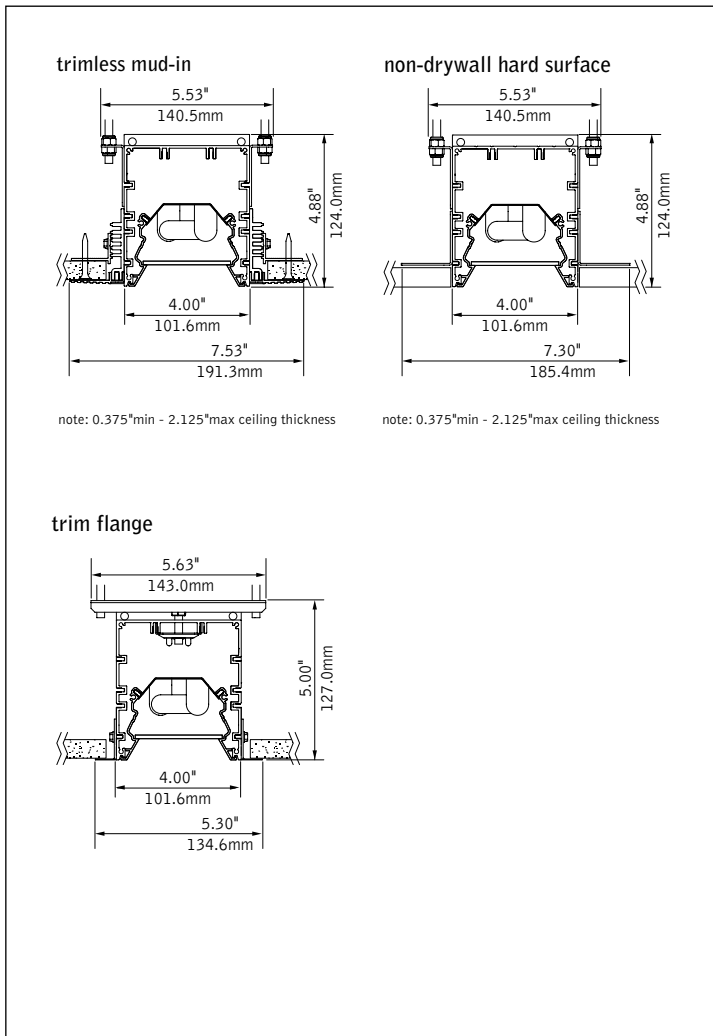


suspended companion



wall mount companion

## DIMENSIONAL DATA



## FEATURES

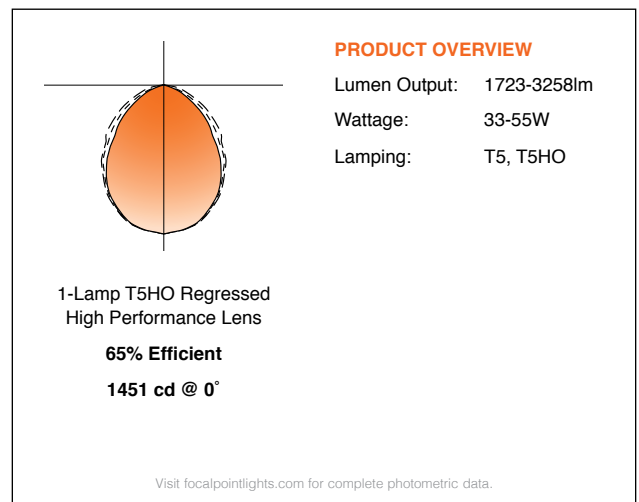
Narrow 4" aperture slot fluorescent luminaire that integrates with the ceiling for a clean unobtrusive aesthetic.

Frosted acrylic regress lens provides even illumination, high performance lens also available for increased efficiency.

Allows for individual and continuous row mount in trimless or flanged drywall applications.

Available in T5 or T5HO, Seem 4 provides continuous illumination by combining 3' and 4' staggered lamps.

## PERFORMANCE



fixture:

project:

### SPECIFICATIONS

#### Construction

One piece, .07" thick housing of 6063-T5 extruded aluminum. 20 Ga. steel end caps. Luminaires include trimless aluminum flange. Lengths 6' and longer configured with staggered lamps: 4.35" overlap, 2' unit weight: 18 lbs., 3' unit weight: 24 lbs., 4' unit weight: 30 lbs., 5' unit weight: 36 lbs., 6' unit weight: 43 lbs., 8' unit weight: 55 lbs.

#### Optic

Reflectors fabricated of 22 Ga. Steel finished in High Reflectance White powder coat. Standard regressed lens (SR): Frosted Acrylic lens, .118" thick. Regressed high performance lens (SRXP): Frosted Acrylic lens, .118" thick with increased light transmission. Lenses up to 8' continuous.

#### Electrical

Luminaires are pre-wired with factory installed branch circuit wiring and over-molded quick connects. Electronic fluorescent ballasts are thermally protected and have a Class "P" rating. Optional dimming ballasts available.

#### Labels

UL and cUL listed.

#### Finish

Polyester powder coat applied over a 5-stage pre-treatment.

### ORDERING

<b>Luminaire Series</b>		<b>FSM4</b>
Seem 4	FSM4	_____
<b>Shielding</b>		_____
Regressed Lens	SR	
Regressed High Performance Lens	SRXP	
<b>Lamping</b>		_____
One Lamp T5	1T5	
One Lamp T5HO	1T5HO	
<b>Circuit</b>		<b>1C</b>
Single Circuit	1C	_____
<b>Voltage</b>		_____
120 Volt	120	
277 Volt	277	
347 Volt	347	
<small>(Consult factory for dimming options)</small>		
<b>UNV Volt</b>	UNV	
<small>(Cannot be specified with 1T5HO dimming or EM options)</small>		
<b>Ballast</b>		_____
Electronic Program Start <10% THD	S	
0-10V	D7	
Lutron 1% 3-wire	DH	
Lutron 1% H-Series	DK	
<b>Mounting</b>		_____
Trim Flange Drywall	TF	
Mud-in Trimless, pre-set for 1/2" Drywall	XF1	
Mud-in Trimless, pre-set for 5/8" Drywall	XF2	
Mud-in Trimless, set thickness in field	XFF	
<small>(Mounting equipment assembled in field)</small>		
Non-Drywall Hard Surface	XFN	
<small>(Not intended for combustible materials)</small>		
<b>Factory Options</b>		_____
Chicago Plenum	CP	_____
Emergency Circuit*	EC	_____
Emergency Battery Pack*	EM	_____
HLR/GLR Fuse	FU	_____
6' New York City Flex Whip	FNY	_____
6' Flex Whip	FW	_____
Include 3000K Lamp	L830	_____
Include 3500K Lamp	L835	_____
Include 4100K Lamp	L841	_____
<b>Finish</b>		<b>WH</b>
Matte White Housing	WH	_____
<b>Luminaire Length</b>		_____
<small>(Lengths are nominal)</small>		
	2'	2'
	3'	3'
	4'	4'
	5'	5'
	6'	6'
	7'	7'
Specify row lengths 8' and longer in 4' increments	X'	
<small>(Lengths 6' and longer configured with staggered lamps)</small>		

# Seem<sup>®</sup> 4

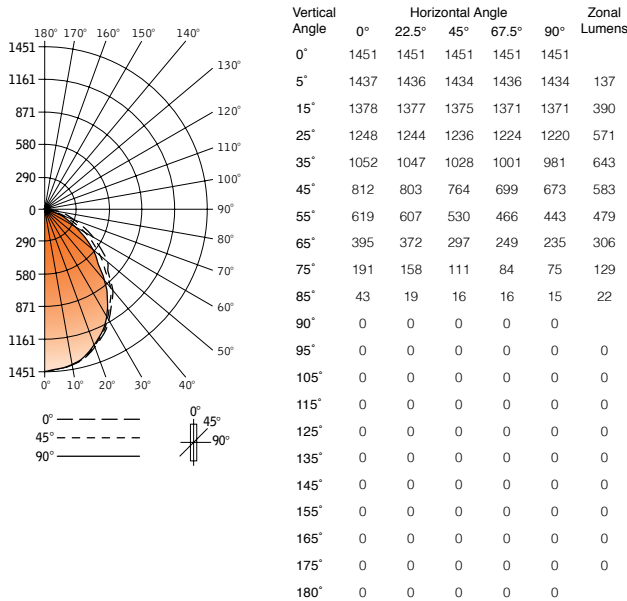
FLUORESCENT - REGRESSED HIGH PERFORMANCE LENS

## FSM4-SRXP-1T5HO-1C-120-S-G1-WH-4'

Filename: FSM4SRXP1T5H.IES  
Test #: 16220.0

Lumens: 3258lm  
Efficiency: 65%

### CANDLEPOWER DISTRIBUTION



### LUMEN SUMMARY

Zone	Lumens	% Lamp	% Fixture
0-30°	1098	22.0	33.7
0-40°	1741	34.8	53.4
0-60°	2802	56.0	86.0
0-90°	3258	65.2	100
<b>Total Luminaire 0-180°</b>	<b>3258</b>	<b>65.2</b>	<b>100</b>

### LUMINANCE DATA (CD/M<sup>2</sup>)

Vertical Angle	0°	45°	90°
45°	11120	10463	9217
55°	10451	8948	7479
65°	9051	6805	5385
75°	7146	4153	2806
85°	4778	1778	1667

### CO-EFFICIENTS OF UTILIZATION

	80				70				20				50				30				10				00			
	Floor	Ceiling	Wall	RCR	Floor	Ceiling	Wall	RCR	Floor	Ceiling	Wall	RCR	Floor	Ceiling	Wall	RCR	Floor	Ceiling	Wall	RCR	Floor	Ceiling	Wall	RCR	Floor	Ceiling	Wall	RCR
0	78	78	78	78	76	76	76	76	72	72	72	72	69	69	69	69	66	66	66	66	65	65	65	65	65	65	65	65
1	72	70	67	65	71	68	64	66	62	63	60	61	59	57	52	55	51	50	51	50	50	50	50	50	50	50	50	50
2	67	62	59	55	65	61	55	65	54	57	52	55	51	50	51	48	45	45	46	45	45	45	45	45	45	45	45	45
3	62	56	51	48	60	55	47	60	46	51	46	50	45	44	45	42	41	41	42	41	41	41	41	41	41	41	41	41
4	57	50	45	41	56	49	41	56	40	46	40	45	39	38	38	37	37	37	38	37	37	37	37	37	37	37	37	37
5	52	45	40	36	51	44	35	51	35	42	35	40	34	34	34	33	33	33	34	33	33	33	33	33	33	33	33	33
6	48	40	35	31	47	40	31	47	31	38	31	37	30	30	30	29	29	29	30	29	29	29	29	29	29	29	29	29
7	45	37	31	28	44	36	27	44	27	35	27	34	27	27	27	26	26	26	27	26	26	26	26	26	26	26	26	26
8	41	33	28	24	40	33	24	40	24	32	24	31	24	24	24	23	23	23	24	23	23	23	23	23	23	23	23	23
9	38	30	24	21	37	29	21	37	21	29	21	28	21	21	21	20	20	20	21	20	20	20	20	20	20	20	20	20
10	35	27	22	19	35	27	19	35	19	26	19	25	18	18	18	17	17	17	18	17	17	17	17	17	17	17	17	17

Numbers indicate percentage values of reflectivity.

Go to [www.focalpointlights.com](http://www.focalpointlights.com) for additional photometric data.

# Seem<sup>®</sup> 4

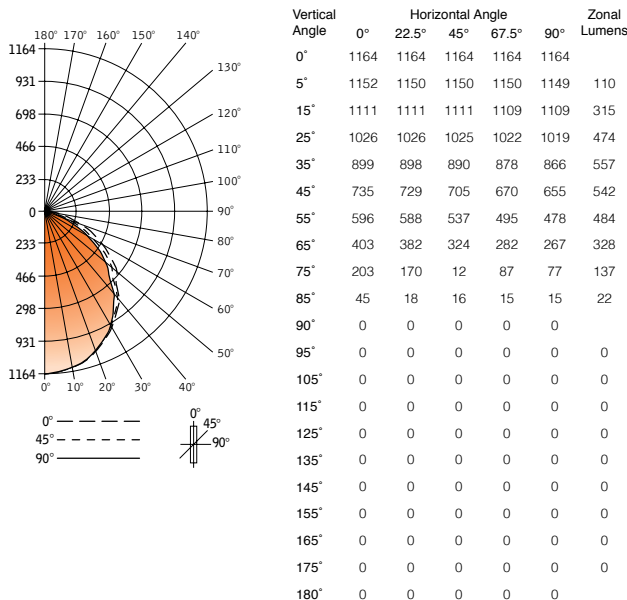
FLUORESCENT - REGRESSED LENS

## FSM4-SR-1T5HO-1C-120-S-G1-WH-4'

Filename: FSM4SR1T5H.IES  
Test #: 16221.0

Lumens: 2124lm  
Efficiency: 59%

### CANDLEPOWER DISTRIBUTION



### LUMEN SUMMARY

Zone	Lumens	% Lamp	% Fixture
0-30°	898	18.0	30.3
0-40°	1456	29.1	49.0
0-60°	2481	49.6	83.6
0-90°	2969	59.4	100
<b>Total Luminaire 0-180°</b>	<b>2969</b>	<b>59.4</b>	<b>100</b>

### LUMINANCE DATA (CD/M<sup>2</sup>)

Vertical Angle	0°	45°	90°
45°	10066	9655	8970
55°	10062	9066	8070
65°	9234	7424	6118
75°	7595	4665	2881
85°	5000	1778	1667

### CO-EFFICIENTS OF UTILIZATION

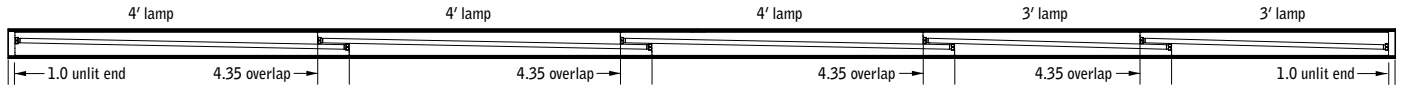
	80				70				20				50				30				10				00			
	Floor	Ceiling	Wall	RCR	Floor	Ceiling	Wall	RCR	Floor	Ceiling	Wall	RCR	Floor	Ceiling	Wall	RCR	Floor	Ceiling	Wall	RCR	Floor	Ceiling	Wall	RCR	Floor	Ceiling	Wall	RCR
0	71	71	71	71	69	69	69	69	66	66	66	66	63	63	63	63	61	61	61	61	61	61	61	61	61	61	61	61
1	66	63	61	59	64	62	58	64	56	57	55	55	53	53	53	52	52	52	53	52	52	52	52	52	52	52	52	52
2	60	56	53	50	59	55	45	59	48	51	47	49	46	46	46	45	45	45	46	45	45	45	45	45	45	45	45	45
3	56	50	46	42	54	49	42	54	41	46	40	44	40	40	40	39	39	39	40	39	39	39	39	39	39	39	39	39
4	51	45	40	36	50	44	36	50	36	42	36	41	35	35	35	34	34	34	35	34	34	34	34	34	34	34	34	34
5	47	40	35	31	46	39	31	46	31	38	30	37	30	30	30	29	29	29	30	29	29	29	29	29	29	29	29	29
6	43	36	31	27	42	35	27	42	27	34	27	33	26	26	26	25	25	25	26	25	25	25	25	25	25	25	25	25
7	40	32	27	23	39	32	23	39	23	31	23	30	23	23	23	22	22	22	23	22	22	22	22	22	22	22	22	22
8	37	29	24	20	36	28	20	36	20	28	20	27	20	20	20	19	19	19	20	19	19	19	19	19	19	19	19	19
9	34	26	21	18	33	25	18	33	18	25	18	24	17	17	17	16	16	16	17	16	16	16	16	16	16	16	16	16
10	31	23	19	16	31	23	16	31	16	23	16	22	15	15	15	14	14	14	15	14	14	14	14	14	14	14	14	14

Numbers indicate percentage values of reflectivity.

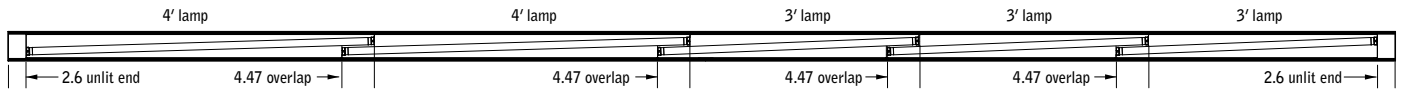
Go to [www.focalpointlights.com](http://www.focalpointlights.com) for additional photometric data.

note: Photometric testing performed in an independent lab with standard lamps and ballasts. Lamp and ballast type and configuration will affect photometric performance.

## EXAMPLE 16' RUN



1-T5/T5HO



1-T8

Nominal run length (ft)	1-T5/T5HO (4.35" overlap)			1-T8 (4.47" overlap)		
	Lamp quantity		Unlit ends (in)	Lamp quantity		Unlit ends (in)
	3'	4'		3'	4'	
8	3		0.5		1.8	
12	2	2	0.3	3	0.3	
16	2	3	1.0	3	2.6	
20	5	2	0.8	6	1.0	
24	1	6	0.9	2	1.1	
28	11		1.0	9	1.8	
32	7	4	1.4	5	1.8	
36	10	3	1.4	1	1.9	
40	13	2	1.4	4	0.4	
44	9	6	1.9		0.4	
48	19		1.5	7	1.1	

\* special lamp stagger to decrease end darkness.

### Notes:

- Lamp overlap is consistent throughout run.
- Unlit ends vary to provide even light throughout run.
- Standard configurations listed, consult factory for additional options.