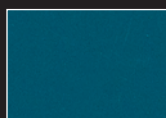
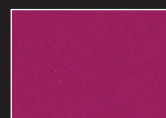


Skydome™

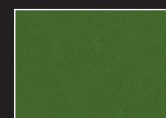
LED SURFACE MOUNT



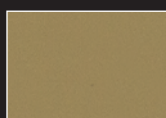
bay blue - gloss



fabulous fuchsia - gloss



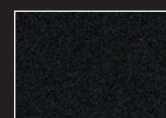
golf green - gloss



modest mushroom - gloss



titanium silver



matte black

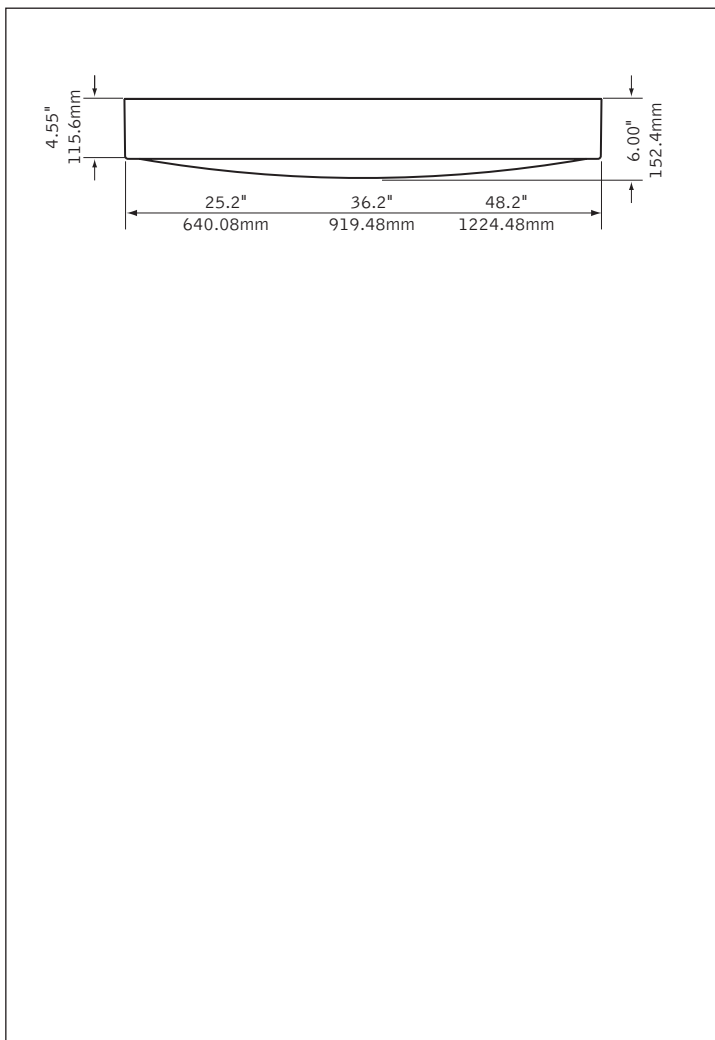


suspended companion



recessed companion

DIMENSIONAL DATA



FEATURES

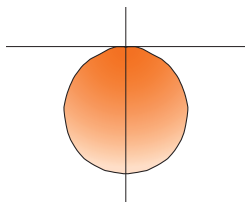
2', 3' and 4' diameter surface mount direct LED with frosted acrylic lens.

Frosted acrylic lens is textured on one side to provide smooth distribution.

Convex lens design and precision LED placement ensures an evenly illuminated diffuser.

Skydome™ is an excellent choice for open public spaces such as airport concourses, large lobbies, reception areas and meeting rooms.

PERFORMANCE



PRODUCT OVERVIEW

Lumen Output: 2000-17000lm

Wattage: 25-194W

LPW: 71-90

SDCM: 3

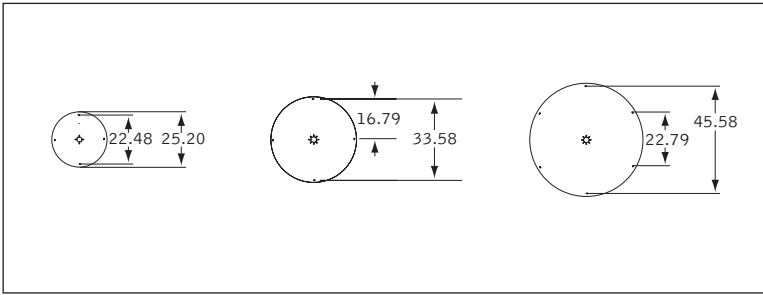
4' Diameter
7000 Lumen Nominal Output
Delivered Lumens: 7000lm
Total System Watts: 77W

Photometric performance is measured in accordance with IESNA LM-79. Visit focalpointlights.com for complete photometric data.

fixture:

project:

MOUNTING INFORMATION



SPECIFICATIONS

LED System

LED module incorporates premium LEDs on a robust platform to achieve excellent thermal management. LEDs are placed to promote a uniform appearance. Available in 2700K, 3000K, 3500K or 4000K with CRI>80 or CRI>90. LED modules and drivers are replaceable from below.

Construction

One-piece 18 Ga. spun steel housing. One-piece 18 Ga. spun steel mounting plate. Housing and lens is secured to mounting plate by torsion springs. Bottom access to driver compartment. 2' unit weight: 23lbs, 3' unit weight: 50lbs, 4' unit weight: 72lbs.

Optic

20 Ga. steel reflector finished in High Reflectance White powder coat. Convex lens of .125" thick white acrylic is secured to housing and removed with torsion springs.

Electrical

Standard 120-277V driver includes 0-10V analog dimming. Power factor > .9. Optional EcoSystem™ driver from Lutron available.

Labels

UL and cUL Listed. Suitable for Dry or Damp Locations, indoor use only.

Finish

Polyester powder coat applied over a multi-stage pre-treatment.

Lumen Maintenance

Reported: L70 at >54,000 hours Calculated: L70 at 76,000 hours
(Derived from EPA TM-21 calculator. Based on typical conditions, consult factory for additional data.)

Reliability

At Focal Point, our products are designed to stand the test of time. Each luminaire is engineered using superior components, manufactured with the utmost care and rigorously tested. Contact us for reliability data.

Warranty

LED system rated for operation in ambient environments up to 25°C. 5 year limited warranty.

PERFORMANCE CHART

Nominal Size	Delivered Lumens	Tested System Watts	LPW
2'	2000	25	80
	3000	39	77
	4000	56	71
3'	4000	48	83
	5000	61	82
	7000	87	80
	9000	117	77
4'	7000	77	91
	9000	100	90
	11000	123	89
	14000	159	88
	17000	194	88

Based on 3500K, 80 CRI. Lumen multiplier: 90+ CRI = 0.87. Lumen output may vary +/- 8%. Actual wattage may vary +/- 5%

ORDERING

Luminaire Series	FSDL	FSDL
Skydome LED	FSDL	
Nominal Size		
2' Diameter	22	
3' Diameter	33	
4' Diameter	44	
Shielding		CX
Frosted Lens	CX	
Lumen Output		
2' Diameter		
2000 Lumen	2000L	
3000 Lumen	3000L	
4000 Lumen	4000L	
3' Diameter		
4000 Lumen	4000L	
5000 Lumen	5000L	
7000 Lumen	7000L	
9000 Lumen	9000L	
4' Diameter		
7000 Lumen	7000L	
9000 Lumen	9000L	
11,000 Lumen	11000L	
14,000 Lumen	14000L	
17,000 Lumen	17000L	
Color Temperature		
2700K, 80+ CRI or 90+ CRI	27K or 927K	
3000K, 80+ CRI or 90+ CRI	30K or 930K	
3500K, 80+ CRI or 90+ CRI	35K or 935K	
4000K, 80+ CRI or 90+ CRI	40K or 940K	
Circuit		1C
Single Circuit	1C	
Voltage		UNV
120/277 UNV Volt	UNV	
Driver		
0-10V - 1% Dimming	L11	
0-10V - 10% Dimming	LD1	
Mounting		SM
Surface Mount	SM	
Finish		
Matte Satin White	WH	
Gloss White	HW	
Titanium Silver	TS	
Matte Black	BK	
Bay Blue - Gloss	BB	
Fabulous Fuscia - Gloss	FF	
Golf Green - Gloss	GG	
Modest Mushroom - Gloss	MM	