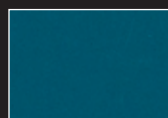


# Skydome™

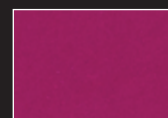
LED STEM/CABLE MOUNT



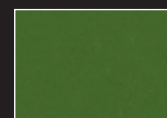
FOCAL POINT®



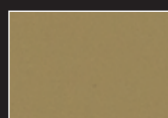
bay blue - gloss



fabulous fuchsia - gloss



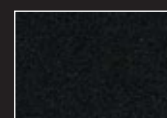
golf green - gloss



modest mushroom - gloss



titanium silver



matte black



cable mount canopy detail

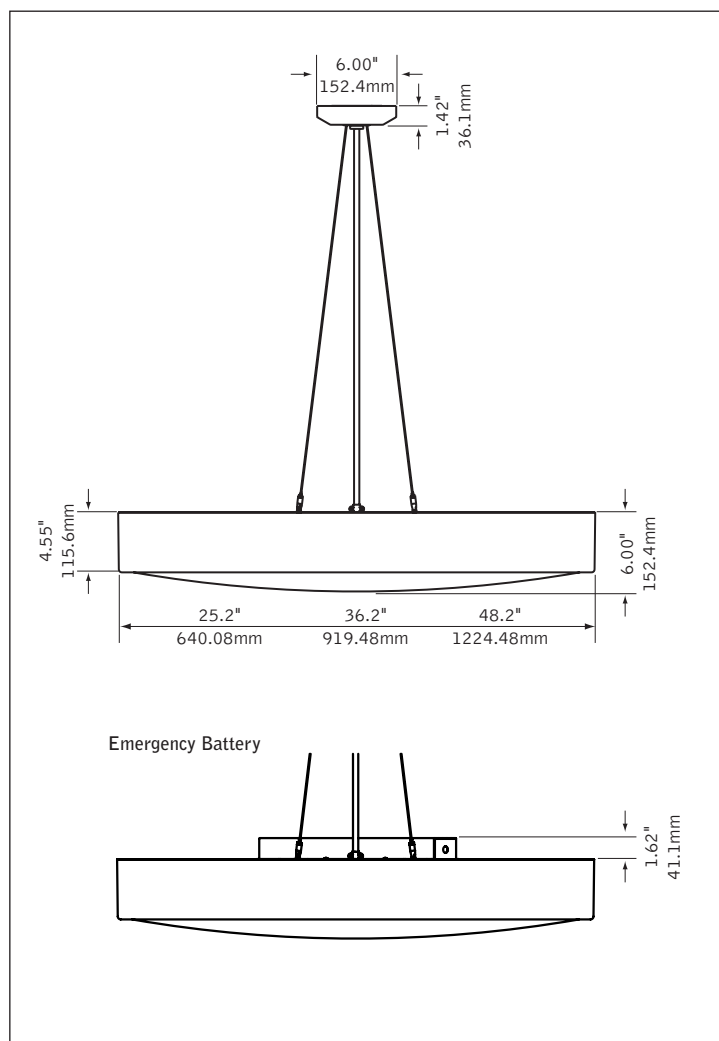


surface mount companion



recessed companion

## DIMENSIONAL DATA



## FEATURES

Pendant mount LED round dome with acrylic diffuser.

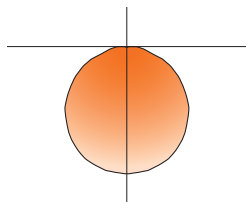
Nominal 2', 3' or 4' diameter housings are available.

Shallow 4.5" deep housing maintains low profile.

Convex lens design ensures an evenly illuminated diffuser.

Skydome™ is a good choice for open public spaces such as airport concourses, large lobbies, reception areas, schools and meeting rooms.

## PERFORMANCE



**PRODUCT OVERVIEW**

Lumen Output: 2000-17000lm

Wattage: 25-194W

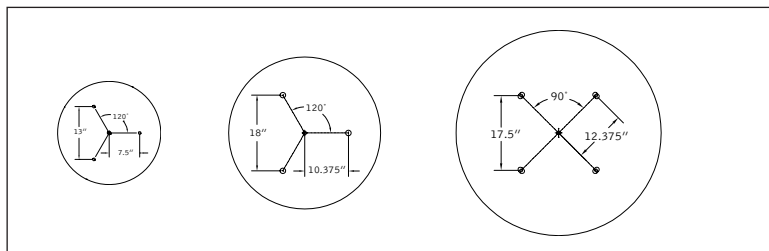
LPW: 71-90

SDCM: 3

4' Diameter  
7000 Lumen Nominal Output  
**Delivered Lumens: 7000lm**  
**Total System Watts: 77W**

Photometric performance is measured in accordance with IESNA LM-79. Visit [focalpointlights.com](http://focalpointlights.com) for complete photometric data.

**STEM MOUNTING INFORMATION**



**SPECIFICATIONS**

**LED System**

LED module incorporates premium LEDs on a robust platform to achieve excellent thermal management. LEDs are placed to promote a uniform appearance. Available in 2700K, 3000K, 3500K or 4000K with CRI>80 or CRI>90. LED modules and drivers are replaceable from below.

**Construction**

18 Ga. spun steel housing. 18 Ga. spun steel mounting pan. Housing available in 25.2", 36.12" or 48.2" diameter x 4.5"H. Housing secured to mounting pan by torsion springs. 12" minimum suspension. 2' unit weight: 23lbs, 3' unit weight: 50lbs, 4' unit weight: 72lbs.

**Optic**

20 Ga. steel reflector finished in High Reflectance White powder coat. Convex lens of .125" thick white acrylic is secured to housing and removed with torsion springs.

**Electrical**

Standard 120-277V driver includes 0-10V analog dimming. Power factor > .9. Optional EcoSystem™ driver from Lutron available.

**Emergency Battery**

Bodine BSL310-CAN. Emergency output—10 watts for 90 minutes.

**Labels**

UL and cUL Listed. Suitable for Dry or Damp Locations, indoor use only.

**Finish**

Polyester powder coat applied over a multi-stage pre-treatment.

**Lumen Maintenance**

Reported: L70 at >54,000 hours      Calculated: L70 at 76,000 hours  
(Derived from EPA TM-21 calculator. Based on typical conditions, consult factory for additional data.)

**Reliability**

At Focal Point, our products are designed to stand the test of time. Each luminaire is engineered using superior components, manufactured with the utmost care and rigorously tested. Contact us for reliability data.

**Warranty**

LED system rated for operation in ambient environments up to 25°C. 5 year limited warranty.

**PERFORMANCE CHART**

Nominal Size	Delivered Lumens	Tested System Watts	LPW
2'	2000	25	80
	3000	39	77
	4000	56	71
3'	4000	48	83
	5000	61	82
	7000	87	80
	9000	117	77
4'	7000	77	91
	9000	100	90
	11000	123	89
	14000	159	88
	17000	194	88

Based on 3500K, 80 CRI. Lumen multiplier: 90+ CRI = 0.87. Lumen output may vary +/- 8%. Actual wattage may vary +/- 5%

Focal Point LLC reserves the right to change specifications for product improvement without notification.

**ORDERING**

Luminaire Series	FSDL	FSDL
Skydome LED	FSDL	
<b>Nominal Size</b>		
2' Diameter	22	
3' Diameter	33	
4' Diameter	44	
<b>Shielding</b>		<b>CX</b>
Frosted Lens	CX	
<b>Lumen Output</b>		
2' Diameter		
2000 Lumen	2000L	
3000 Lumen	3000L	
4000 Lumen	4000L	
3' Diameter		
4000 Lumen	4000L	
5000 Lumen	5000L	
7000 Lumen	7000L	
9000 Lumen	9000L	
4' Diameter		
7000 Lumen	7000L	
9000 Lumen	9000L	
11,000 Lumen	11000L	
14,000 Lumen	14000L	
17,000 Lumen	17000L	
<b>Color Temperature</b>		
2700K, 80+ CRI or 90+ CRI	27K or 927K	
3000K, 80+ CRI or 90+ CRI	30K or 930K	
3500K, 80+ CRI or 90+ CRI	35K or 935K	
4000K, 80+ CRI or 90+ CRI	40K or 940K	
<b>Circuit</b>		<b>1C</b>
Single Circuit	1C	
<b>Voltage</b>		<b>UNV</b>
120/277 UNV Volt	UNV	
<b>Driver</b>		
0-10V - 1% Dimming	L11	
0-10V - 10% Dimming	LD1	
Lutron A-Series	L3D	
1% EcoSystem Digital <small>(Consult factory for 3-wire control)</small>		
<b>Mounting</b>		
24" Aircraft Cable	C24	
48" Aircraft Cable	C48	
96" Aircraft Cable	C96	
12" Rigid Stem	S12	
18" Rigid Stem	S18	
24" Rigid Stem	S24	
36" Rigid Stem	S36	
48" Rigid Stem	S48	

(White stems and canopies supplied standard. For non-white housings: to match stem and housing color, add M to ordering code (S12M). To match stem, canopy and housing color, add MC to ordering code (S12MC)  
(Consult factory for other lengths)

**Factory Options**

Emergency Battery	EM
Solid Top Cover Plate	TC

(Painted to match housing. Not available with EM.)

**Finish**

Matte Satin White	WH
Gloss White	HW
Titanium Silver	TS
Matte Black	BK
Bay Blue - Gloss	BB
Fabulous Fuscia - Gloss	FF
Golf Green - Gloss	GG
Modest Mushroom - Gloss	MM