

Project:

**Model No: LIN-\_\_\_-SN**

Type:

Quantity:

## Product Description

A tubular frosted glass diffuser paired with a stamped steel back plate in Satin Nickel adds contemporary styling to a new value-priced vanity and wall sconce.

## Light

- LED color temperature: 3000K
- Color Rendering Index: 90 CRI



JA8 2016

## Design

- Stamped Steel construction
- Frosted glass tube diffuser
- Damp location rated

## Controls

- 120 VAC 50/60Hz input
- TRIAC dimmable

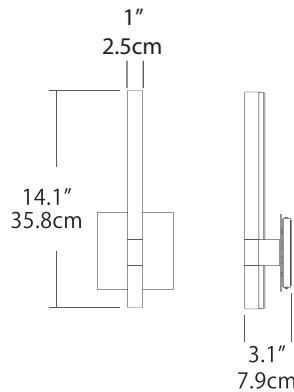
### Recommended TRIAC dimmers:

- LUTRON:** SKYLARK SCL-153P, DIVA DVCL-153P, ARIADNI AYCL-153P
- LEVITON:** DECORA DSL06 or DSM10, ILLUMATECH IPL06, SURESLIDE 6674
- LEGRAND-ADORNE:** WHISPER ADWR, SOFTTAP ADTP, TOUCH ADTH

## 14" LINO SCONCE

**Model No: LIN-14S-SN**  
(Satin Nickel)

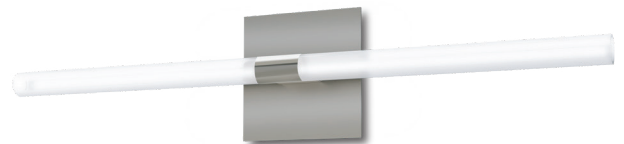
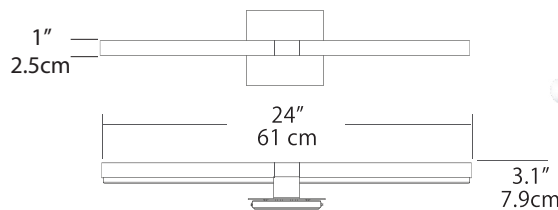
Fixture Wattage: 10 Watts  
Fixture Output: 917 Lumens



## 24" LINO VANITY

**Model No: LIN-24V-SN**  
(Satin Nickel)

Fixture Wattage: 21 Watts  
Fixture Output: 1140 Lumens



tel: (847) 941-0588  
fax: (847) 306-3432  
email: [sales@blackjacklighting.com](mailto:sales@blackjacklighting.com)  
[Blackjacklighting.com](http://Blackjacklighting.com)