

● **PROJECT INFORMATION**

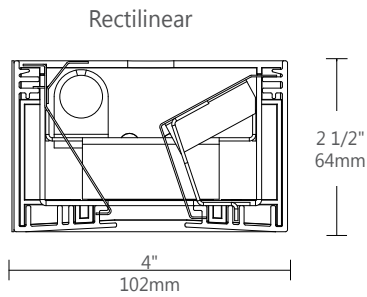
Project:

Type:

Notes:

● **DIMENSIONS**

END VIEW



● **ORDERING CODE**

1	2	3	4	5	6	7	8	9	10	11	12	13
---	---	---	---	---	---	---	---	---	----	----	----	----

● **PRODUCT SPECIFICATIONS**

1 PRODUCT ID	2 OPTICS	3 LENGTH/FT	4 LAMP	5 LAMP CONFIGURATION	6 FINISH
TWRW rectilinear wall	VL vl optic S satin lens	4 4' 8 8' 12 12' S# System Run	T5 T5 T5HO T5HO	1 1 lamp	AP aluminum paint W white C custom

7 VOLTAGE	8 BALLAST	9 CIRCUITS	10 BATTERY	11 OTHER (OPTIONAL)
120 120V 277 277V 347 347V ⁽¹⁾ UNV universal	D dimming E instant start ⁽²⁾ ERS program start BI bi-level dimming	1 1 regular 2 2 regular 2A/B 2 alternating +E(#) emergency section +NL(#) night light section +GTD(#) generator transfer device	B# battery pack 4' sections	D dust cover F fuse

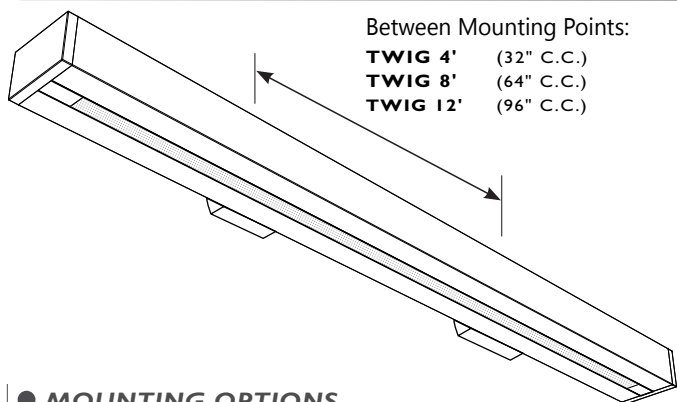
(1) Consult factory

(2) Available with T8 lamp only

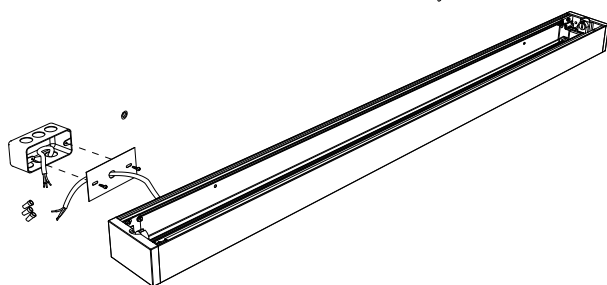
Requires 120V or 277V

12 IC CONTROLS (OPTIONAL)	13 CUSTOM (OPTIONAL)
DS# daylight sensor OS# occupancy sensor DS+OS# daylight+occupancy sensor DOS# daylight&occupancy sensor	C custom
See integrated controls guide for further details	Please specify

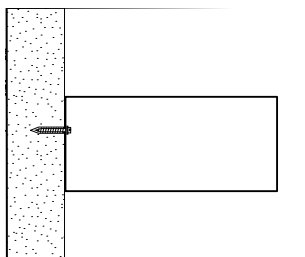
● **MOUNTING SPACING**



● **MOUNTING OPTIONS**



MOUNTING BRACKETS



SIDE VIEW

i Installation sheets for all mounting options are available at: www.axislighting.com

● **SYSTEMS (S#)**

Runs of TWIG that are greater than 12ft in length are designated as systems (S#). This means that the run is comprised of a combination 4ft, 8ft and/or 12ft sections to be assembled on site using our joining system. For more information on systems and joining, please refer to the TWIG installation sheets available for download at www.axislighting.com

● **OTHER MOUNTING OPTIONS**

TWIG is also available with a pendant mounted option.

i Specification sheets for pendant mounted TWIG luminaires are available for download at www.axislighting.com

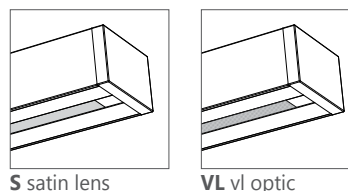
● **CONSTRUCTION**

Housing	Extruded aluminium (0.075" nominal)
End Cap	Die cast zinc (0.10" nominal)
Joiners	Die cast zinc (0.10" nominal)
Interior Brackets	Die formed cold rolled sheet steel (16 gauge)
Reflectors	Die formed specular aluminum (0.020" nominal)
Satin lens	PMMA satin finish (0.060" nominal) 68% trans.
VL^{opti}c	Acrylic 92% transmissive lens

● **WEIGHT**

	RECTILINEAR
TWIG 4 ft	10.6lbs / 4.9kg
TWIG 8 ft	20.2lbs / 9.2kg
TWIG 12 ft	29.8lbs / 13.5kg

● **OPTICAL OPTIONS**



● **LIGHT DISTRIBUTION**



semi-indirect


● **FINISH**

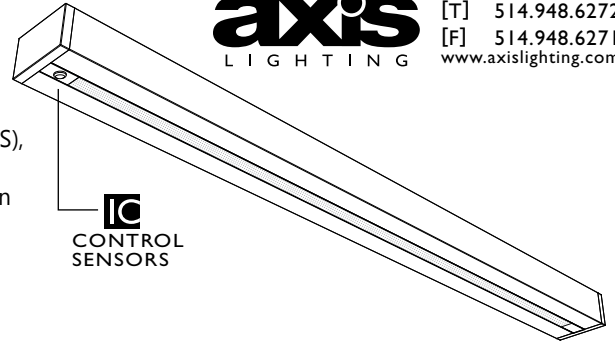
Aluminium paint, Powder Coated and custom finishes are also available.

● **ELECTRICAL**

Ballast	Electronic IS, Electronic Rapid Start, Dimming (0-10V, Line, EcoSystem, DALI), BI-level dimming With preinstalled ballast disconnect as per NEC & CEC
Emergency	Emergency battery pack or emergency circuit
Voltage	120V, 277V, 347V, UNV

● **APPROVALS**

Certified to UL and CUL standards  TWIG RECTILINEAR Meets ADA requirements. Suitable for damp locations.



● **INTEGRATED CONTROL OPTIONS**

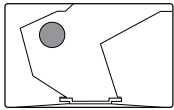
TWIG luminaires allow the use of integrated controls such as daylight sensors (DS), occupancy sensors (OS), individual daylight sensors and occupancy sensors (DS+OS), and combination daylight/occupancy sensors (DOS). These options can be seamlessly integrated into our luminaires. The control system could be used to optimize the lighting of the space by reducing energy consumption through daylight harvesting and occupancy, thereby improving the overall interior environment and allowing for LEED credits.

- Consult factory for other options.
- Refer to IC brochure for more information.

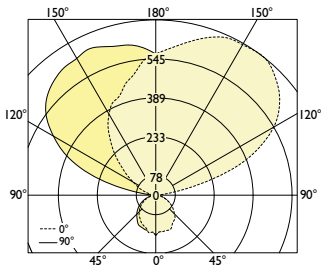
SENSORS	BRAND	Model	TYPE	CODE	COMPATIBLE DIMMING BALLAST
Daylight Sensor (DS)	Lutron	EC-DIR-WH	Daylight	LD	EcoSystem
	Wattstopper	FD-301	Daylight	WD	0-10V
	Philips	Luxsense	Daylight	PL	0-10V
Occupancy Sensor (OS)	Wattstopper	FS-205	PIR Occupancy	WP1	Programmed Rapid Start
		FS-355	PIR Occupancy	WP2	Programmed Rapid Start
		FM-105	High Frequency Occupancy	WH	Programmed Rapid Start
Daylight & Occupancy Sensors (DOS)	Philips	Actilume	Daylight & PIR Occupancy	PA	DALI or 0-10V

● **PHOTOMETRIC DATA**

TWRW | T5



PHOTOMETRIC CURVE



Test Lamp: 2xF28T5
 IES FILE: TWRW-S-4-T5-1.ies

Efficiency: 78.0 %

CANDELA DISTRIBUTION

Vertical Angle	Horizontal Angles					Zonal Lumens
	0	22.5	45	67.5	90	
0	160	160	160	160	160	
5	148	147	150	148	148	8
15	147	145	140	139	140	34
25	146	140	133	125	127	57
35	125	127	121	112	111	73
45	105	107	104	93	92	78
55	80	84	85	73	72	74
65	52	58	62	52	49	60
75	26	33	44	29	27	41
85	5	11	30	12	9	21
90	0	6	22	6	5	
95	19	27	34	8	6	16
105	209	214	115	39	34	97
115	461	406	226	96	79	222
125	602	531	324	183	140	302
135	673	600	406	277	232	334
145	700	628	472	353	332	319
155	692	643	519	421	408	264
165	645	617	551	486	462	180
175	587	592	579	539	542	81
180	564	564	564	564	564	

COEFFICIENTS OF UTILIZATION (%)

Ceiling	80			70			50				
	70	50	30	10	70	50	30	10	50	30	10
Wall	70	50	30	10	70	50	30	10	50	30	10
0	78	78	78	78	69	69	69	69	52	52	52
1	71	68	65	62	63	60	57	55	45	44	42
2	64	59	54	50	57	52	48	45	39	37	35
3	59	52	46	42	52	46	41	37	35	32	29
4	54	46	40	35	47	40	35	32	31	27	24
5	49	40	34	30	43	36	31	27	27	24	21
6	45	36	30	26	40	32	27	23	24	21	18
7	41	32	26	22	36	29	24	20	22	18	16
8	38	29	23	19	34	26	21	17	20	16	14
9	36	26	21	17	31	24	19	15	18	15	12
10	33	24	19	15	29	21	17	14	17	13	11

Based on floor reflectance of 20

LUMINANCE DATA (CD/M²)

Vertical Angle	Horizontal Angles		
	0	45	90
45	739	1133	647
55	597	1107	534
65	425	1071	399
75	247	1151	249
85	56	1763	98

i All IES files are available for download at: www.axislighting.com