



Project \_\_\_\_\_

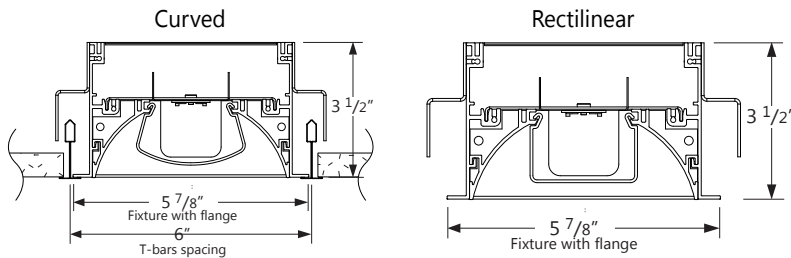
Type \_\_\_\_\_

Notes \_\_\_\_\_

### PERFORMANCE AT 3500K

NOMINAL LUMEN OUTPUT	INPUT WATTS*	EFFICACY
580 lm/ft	6.3 W/ft	95 lm/W

Please consult factory for custom lumen output and wattage.



**TECHZONE™ AND LOGIX™ COMPATIBLE**

for more info see page 3

## Ordering Guide

TEK6LED		580			S	
PRODUCT ID	LENS	NOMINAL LUMENS		CRI	COLOUR TEMP.	SHIELDING
<b>TEK6LED</b> Tek 6" LED	<b>C</b> curved <b>R</b> rectilinear	<b>580</b>	580 lm/ft	<b>80</b> 80 CRI <b>90</b> 90 CRI	<b>30</b> 3000 K <b>35</b> 3500 K <b>40</b> 4000 K	<b>S</b> satin lens

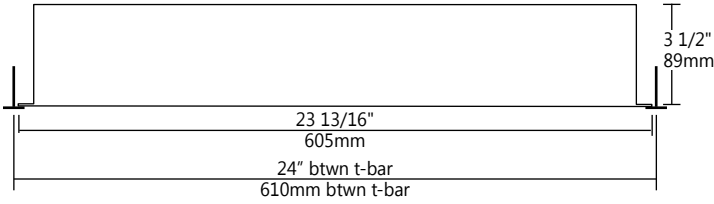
LENGTH/FT	FINISH	VOLTAGE	DRIVER	CIRCUITS	MOUNTING/SUSPENSION
2 2'	<b>W</b> white	<b>120</b> 120 V	<b>DP</b> dimming (0-10V) 1%	<b>1</b> 1 circuit	<b>TB9</b> t-bar 9/16"
4 4'	<b>C</b> custom	<b>277</b> 277 V	<b>LT</b> lutron <sup>(1)</sup>	<b>+E(#)</b> emergency circuit <sup>(3)</sup>	<b>TB15</b> t-bar 15/16"
5 5'		<b>347</b> 347 V	<b>BI</b> bi-level dimming	<b>+NL(#)</b> night light circuit <sup>(3)</sup>	<b>ST</b> screw slot t-bar
		<b>UNV</b> universal	<b>O</b> other <sup>(4)</sup>	<b>+GTD(#)</b> generator transfer device <sup>(3)</sup>	<b>TG9</b> tegular 9/16"
			<b>+M</b> master		<b>TG15</b> tegular 15/16"
			<b>+S</b> satellite		<b>DF</b> drywall flange
			(1) Specify system (2) Please consult factory; see page 2	(3) Specify quantity	

BATTERY (OPTIONAL)	OTHER (OPTIONAL)	IC CONTROLS (OPTIONAL)	FUNCTIONALITY PLATES	CUSTOM (OPTIONAL)
<b>B#</b> battery pack	<b>F</b> fuse <sup>(4)</sup> <b>FW(#)</b> flex whip (6' std) <b>CP</b> chicago plenum	<b>DS#</b> daylight sensor <b>OS#</b> occupancy sensor <b>DOS#</b> daylight & occupancy sensor <b>EN#</b> enlightened integral <sup>(5)</sup> <b>ENR#</b> enlightened remote <sup>(5)</sup> <b>WC#</b> wireless control dimming	<b>MR16#</b> MR16 lamp <b>AR#</b> air return plate <b>BK#</b> blank plate <b>SR#</b> sprinkler plate <b>SPK#</b> speaker plate	<b>C</b> custom
Not available with 347V Please consult factory	(4) Requires 120V or 277V	(5) Please consult factory Specify quantity. Requires 1.5" blank See integrated controls guide for more details.	For 4ft and 5ft only	Please specify

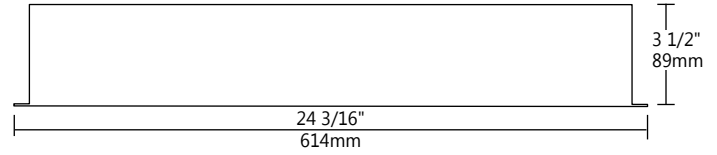
## ● DIMENSIONS - SIDE VIEW

### TEK - 2FT

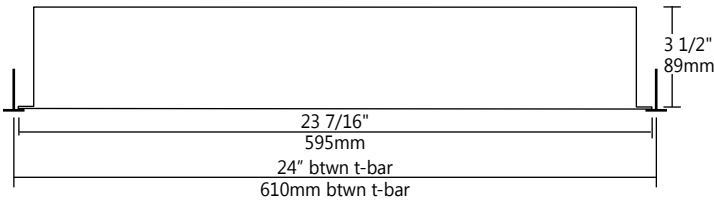
#### TB9 - TB15 - TG9 - ST



#### DF

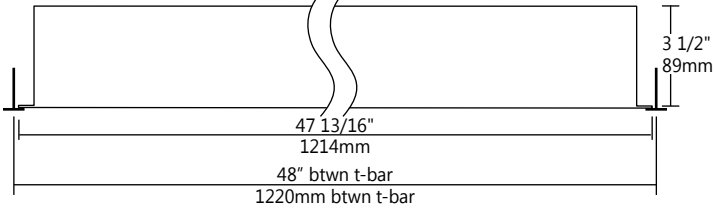


#### TG15

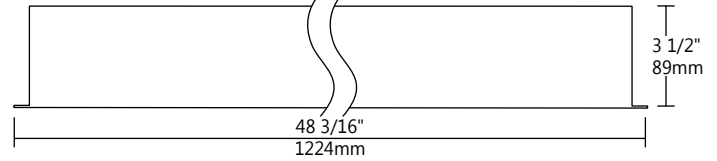


### TEK - 4FT

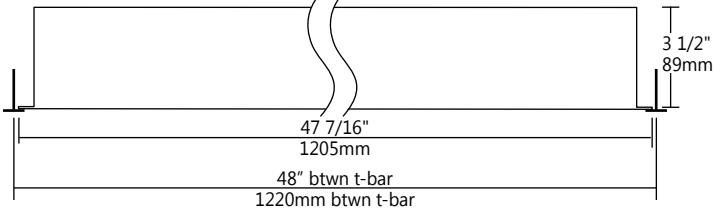
#### TB9 - TB15 - TG9 - ST



#### DF

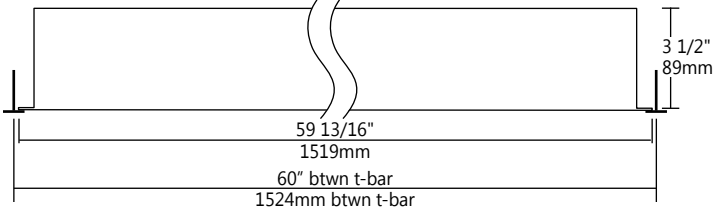


#### TG15

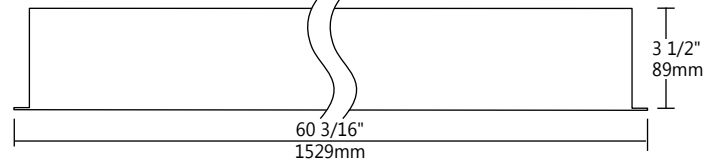


### TEK - 5FT

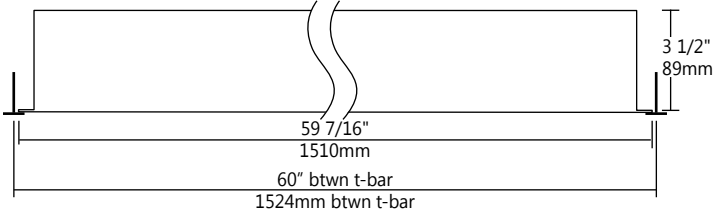
#### TB9 - TB15 - TG9 - ST



#### DF



#### TG15



## ● FUNCTIONALITY PLATES

TEK 6 is compatible with the Armstrong Techzone™ and USG Logix™ ceiling systems.

Air return and MR16 accent plates are provided complete, as shown. Speaker and sprinkler plates are ready to receive customer-furnished and installed equipment. Custom applications, can also be accommodated.

Nominally 6" long, the Functionality Plates are supplied in pairs for each applicable luminaire but can be specified with the same or different functions.

**i** Consult your Axis Representative to coordinate the specification.

## ● SPECIFICATIONS

### CONSTRUCTION

<b>Housing</b>	Extruded aluminum (0.070" nominal)
<b>Reflectors</b>	Extruded aluminum (0.070" nominal)
<b>Interior Brackets</b>	Die formed cold rolled sheet steel (18 gauge)
<b>Ballast Cover</b>	Die formed cold rolled sheet steel (24 gauge)
<b>Functionality Plate</b>	Die formed cold rolled sheet steel (22 gauge)
<b>T-Bar Bracket</b>	Die formed cold rolled sheet steel (16 gauge)

## ● ELECTRICAL

**Lutron driver\*** LDE1 - EcoSystem H-Series (1%)  
 LDE5 - EcoSystem 5-Series (5%)  
 LTE - Hi-Lume® A-series 2Wires Forward Phase (1%)  
 \*Consult factory

**Other drivers** DALI - Digital Addressable Lighting Interface  
 DMX - Digital Multiplex  
 LV - line voltage - Advance Mark 10  
 Xitanium SR - For wireless sensor

**Emergency** Integral emergency battery pack or emergency circuit optional.

**Input Voltage** 120V, 277V, 347V, UNV.

**i** Incorporating these components may have limitations or affect the length of the luminaire. Please contact factory for more details.

## ● WEIGHT

**2ft** - 7.5lbs/3.4kg, **4ft** - 14lbs/6.4kg, **5ft** - 17.3lbs/7.8kg

## ● FINISH

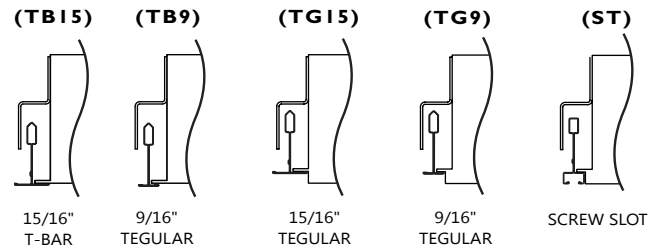
Highly reflective, matte powder coat white paint for high efficiency. Matte texture to diffuse glare and lamp image on the surface within the optical chamber exterior. Custom finishes are also available.

## ● APPROVALS

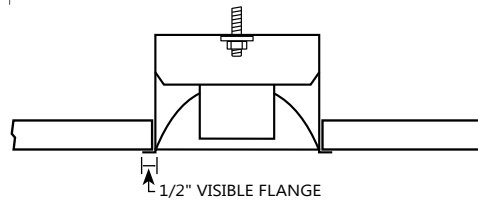
Certified to UL and CSA standards   
 Chicago Plenum Certified (CCEA)  
 Meets NYC requirements  
 Suitable for damp locations.  
 IC Rated (Insulated ceiling)

## ● CEILING SYSTEM

### T-BAR STYLE MOUNTING



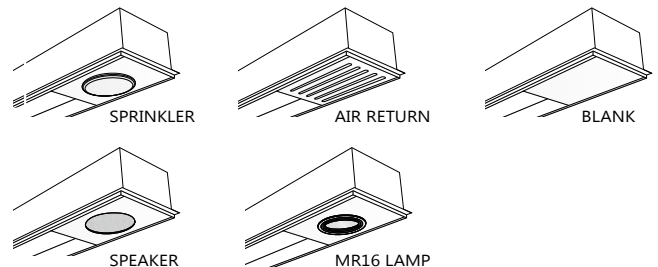
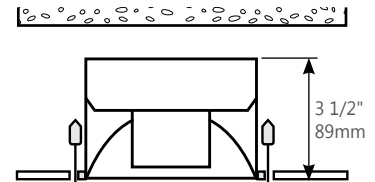
### DRYWALL MOUNTING



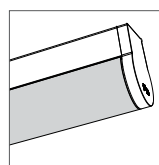
**i** Installation sheets for all mounting options are available at: [www.axislighting.com](http://www.axislighting.com)

### ● RESTRICTED PLENUM SPACE

With a 3 1/2" depth, TEK's low-profile allows easy installation where plenum space is restricted.



## ● OPTICS



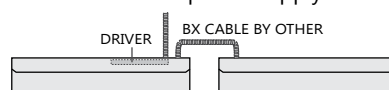
S satin lens

### SATIN LENS

PMMA satin finish (0.060" nominal) 68% trans.

## ● MASTER / SATELLITE CONFIGURATION

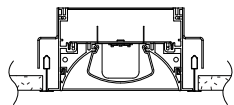
Master / Satellite configuration allows the satellite luminaire to share a driver and power supply with the master luminaire.



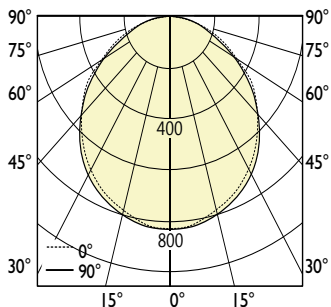
**i** Check Master/Satellite Installation Guide at: [www.axislighting.com](http://www.axislighting.com)

## ● PHOTOMETRIC DATA

580 lm/ft



### PHOTOMETRIC CURVE



**Luminaire Lumens: 580 lm/ft**  
**Input Watts: 6.3 W/ft**  
**Efficacy: 92 lm/W**  
 IES FILE: TEK6LED-580-80-35-S.IES

TESTED ACCORDING TO IES LM-79-2008

### CANDELA DISTRIBUTION

Vertical Angle	Horizontal Angles				
	0	22.5	45	67.5	90
0	827	827	827	827	827
5	819	824	823	827	829
15	791	797	798	802	805
25	734	740	744	749	753
35	654	659	666	668	669
45	553	558	562	553	549
55	435	442	429	416	413
65	302	302	284	274	270
75	164	153	139	132	130
85	40	27	21	19	19
90	0	0	0	0	0

### ZONAL LUMENS

Zone	Lumens
0	78
0-10	225
10-20	343
20-30	415
30-40	429
40-50	382
50-60	283
60-70	152
70-80	32
80-90	0
90	0

### LUMINANCE DATA (cd/m<sup>2</sup>)

Vertical Angle	Horizontal Angles		
	0	45	90
45	5518	5608	5479
55	5352	5278	5081
65	5042	4842	4508
75	4471	3790	3544
85	3238	1700	1538

**i** All IES files are available for download at: [www.axislighting.com](http://www.axislighting.com)