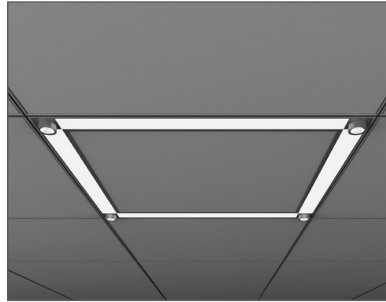


Linear option shown



Kit option shown

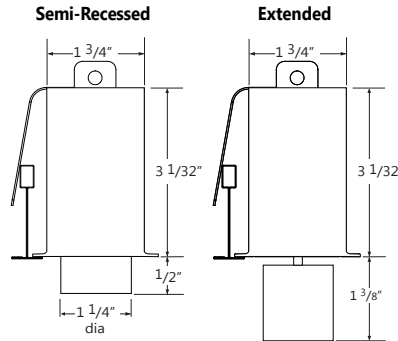
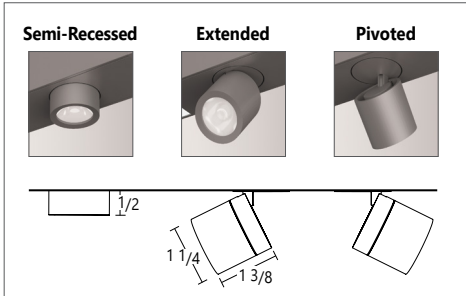
Project _____

Type _____

Notes _____

PERFORMANCE

| Beam Spread | 24° | 36° | 60° |
|-------------|---------|--------|--------|
| CBCP | 2287 cd | 796 cd | 446 cd |



A configuration drawing is required

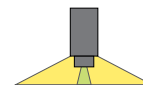
See page 8

Ordering Guide

| SCRLAC | | ACCENT QTY | | BEAM | | SHIELDING for-ACCENT (OPTIONAL) | | DRIVER - for ACCENT | |
|--|--|------------|-----------------|------|-----------------------------------|---------------------------------|---------|---------------------|---------------------|
| PRODUCT ID | SCULPT | AC(#) | Accent quantity | D24 | 24 deg | HX | hexcell | D | dimming (0-10V) 10% |
| SCRLAC | Sculpt Recessed with lens and Accent LED | | | D36 | 36 deg | | | | |
| | | | | D60 | 60 deg | | | | |
| | | | | CBS | custom arrangement ⁽¹⁾ | | | | |
| (1) All Accents on a module will have the same beam spread. Consult factory for custom beam spreads arrangements. Final beam spread arrangements will be specified on shop drawings. | | | | | | 1/8" extended insert | | | |

| NOM. LUMENS/FT for-Sculpt | CRI | COLOR TEMP. | SHIELDING for-Sculpt | LINEAR LENGTH or CEILING KIT (select one) | FINISH |
|---|-----------|---------------------------------|--------------------------------------|---|--|
| 300 300 lm/ft | 80 80 CRI | 27 2700 K | FL flush | 4 4' | AP aluminum paint |
| 400 400 lm/ft | 90 90 CRI | 30 3000 K | 0.5M 0.5" StepLens, lum. end cap | 8 8' | W white |
| 500 500 lm/ft | | 35 3500 K | 0.5P 0.5" StepLens, opaque end cap | 12 12' | BLK black |
| | | 40 4000 K | 2M 2" StepLens, lum. end cap | S# System Run | |
| | | | 2P 2" StepLens, opaque end cap | 2x2 2'x2' ⁽³⁾ | |
| | | | +BL(#) Blank (for flush option only) | 2x4 2'x4' ⁽³⁾ | |
| | | | | 2x6 2'x6' ⁽³⁾ | |
| | | | | 2x8 2'x8' ⁽³⁾ | |
| | | | | 2x10 2'x10' ⁽³⁾ | |
| | | | | 2x12 2'x12' ⁽³⁾ | |
| | | | | 4x4 4'x4' ⁽³⁾ | |
| | | | | K(#) Other kits ⁽³⁾ | |
| Please consult factory for other lumen packages | | Applies for both Accent and LED | Applies for both Accent and LED | All lens options use spotlight lens | (2) Available as kit; Sculpt accommodates any length. Metric lengths also available, please consult factory. |

| VOLTAGE | DRIVER for-Sculpt | CIRCUITS | MOUNTING/SUSPENSION | | | CUSTOM (OPTIONAL) | | |
|------------------------------|--------------------------|---|---|--|------|------------------------|---|--------|
| 120 120 V | DP dimming (0-10V) 10% | 1 1 circuit | MFTB9 | MiniFlange t-bar 9/16" ⁽⁵⁾ | ST | screw slot t-bar | C | custom |
| 277 277 V | LT Lutron ⁽³⁾ | 2 2 circuits | MFTB15 | MiniFlange t-bar 15/16" ⁽⁵⁾ | TG9 | tegarular 9/16" | | |
| UNV universal | BI bi-level dimming | | MFTS | MiniFlange screw slot t-bar ⁽⁵⁾ | TG15 | tegarular 15/16" | | |
| | O other ⁽⁴⁾ | | MFTG9 | MiniFlange 9/16" t-tegarular ⁽⁵⁾ | DF | drywall flange | | |
| | | | MFTG15 | MiniFlange 15/16" t-tegarular ⁽⁵⁾ | D | drywall flangeless | | |
| | | | TB9 | t-bar 9/16" | DB | slip-through bracket | | |
| | | | TB15 | t-bar 15/16" | DS | drywall spackle flange | | |
| Applies to both Accent & LED | | (3) Specify system (4) Please consult factory | (5) Must select from these options when ordering kits. See page 3 for more details. | | | Please specify | | |



LED SYSTEM

| | |
|---------------------------|---|
| CRI | Minimum 80 or 90 color rendering index |
| CCT | 3000K color temperature with a great color consistency (within 3.0-step MacAdam ellipse). |
| LED life | Minimum 50,000h with 70% of lumen maintenance in 25°C ambient temperature, in compliance with IES LM-80 testing measurements. |
| Thermal Management | Aluminum housing acting as the heat sink to maximize life. |

CONSTRUCTION

| | |
|--------------------------|---|
| Housing | Extruded aluminum (0.080" nominal) |
| End Cap | Die cast aluminum |
| Interior Brackets | Die formed sheet steel (20 gauge) |
| Reflectors | White powder coated sheet steel (22 gauge) |
| Lenses | Extruded acrylic (0.060" nominal) - injection moulded |
| Hanger | Die cast aluminum |
| Suspension | Sliding aircraft cable along product length |
| Cable Grips | Quick connecting / release |

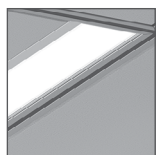
ELECTRICAL

Input Voltage 120V, 277V, UNV.

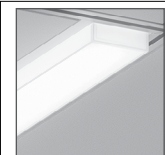
WARRANTY

Axis lighting will warrant defective LEDs, boards, and drivers for 5 years from date of purchase. Warranty is valid if luminaire is installed and used according to specifications. If defective, Axis will send replacement boards or drivers at no cost along with detailed replacement instructions and instructions on how to return defective components to Axis.

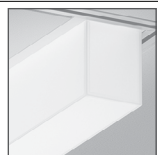
SHIELDING - Frosted acrylic Spotless lens



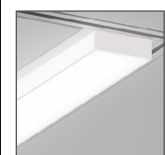
FL flush



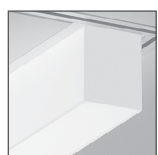
0.5M 0.5" StepLens, lum. end cap



2M 2" StepLens, lum. end cap



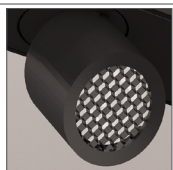
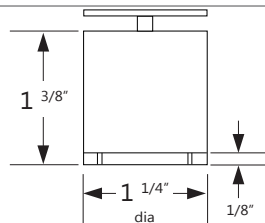
0.5P 0.5" StepLens, opaque end cap



2P 2" StepLens, opaque end cap



HEXCELL SHIELDING OPTIONS



SAFETY NOTE

Although Accent lamps operate at cooler temperatures than halogen lamps, it is recommended that gloves be worn when adjusting Accents that have been energized.

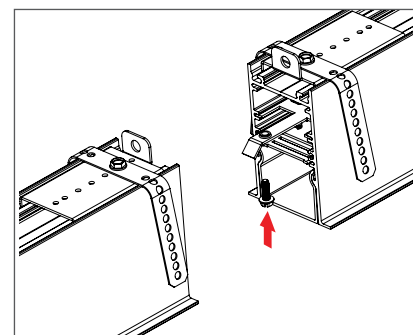
*Patent Number: 9416535 B1

WEIGHT

| | |
|--------------|------------------|
| 4 ft | 8 lbs / 3.6 kg |
| 8 ft | 16 lbs / 7.3 kg |
| 12 ft | 24 lbs / 10.9 kg |

JOINERS

In order to allow very long runs of SCULPT luminaires, Axis has developed an effective joining system. Special care has been taken to maximize the performance of the joiner for each SCULPT option.



NOTE: Mount each system segment individually. Do not assemble system prior to mounting.

i Allow a minimum of 6" between end of long runs and vertical wall

APPROVALS

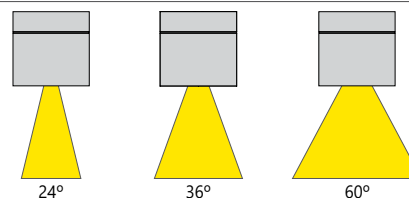
Certified to UL and CUL standards
Suitable for damp locations.



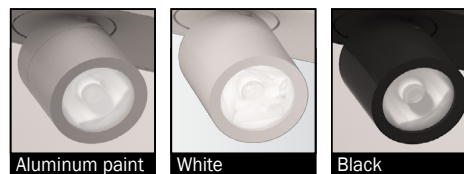
SYSTEM (S#)

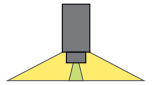
SCULPT linear systems, with the use of a strong profile, allow for a nearly hair thin connection system of continuous runs. Lengths of 4', 8', 12' as well as custom lengths are available. Runs of SCULPT that are greater than 12' in length are designated as systems (S#). This means that the run is comprised of a combination of 4', 8' and/or 12' sections to be assembled on site using our joining system. For more information on systems and joining, please refer to the SCULPT installation sheets available for download at www.axislighting.com.

BEAM SPREADS

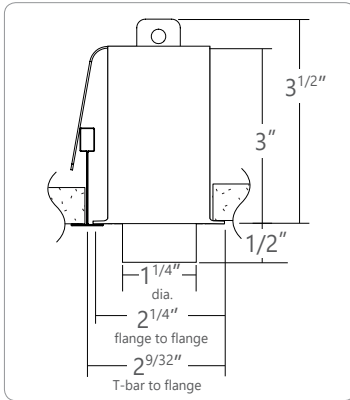


FINISHES

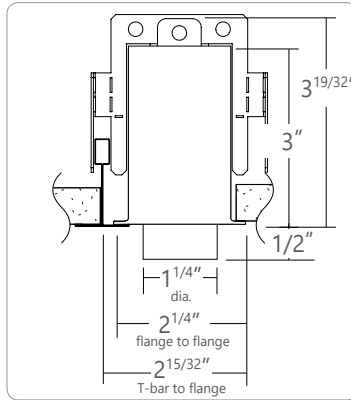




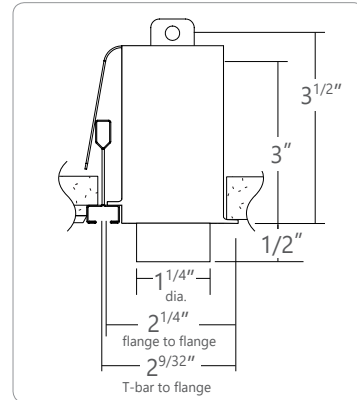
● KIT AND LINEAR - WITH INTEGRATED



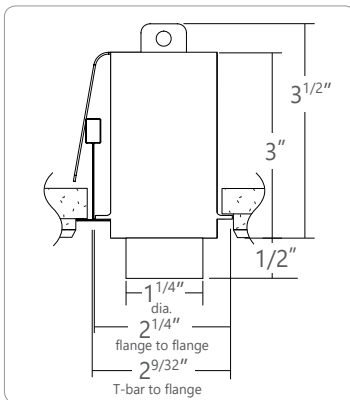
MFTB9 MiniFlange 9/16" T-BAR



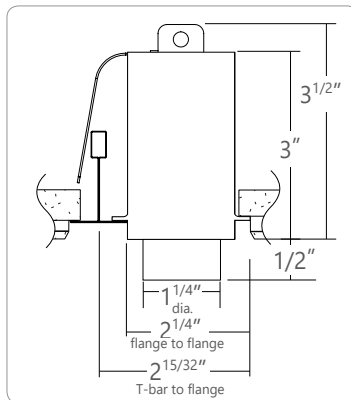
MFTB15 MiniFlange 15/16" T-BAR



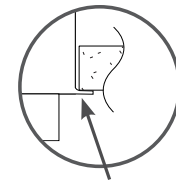
MFST MiniFlange SCREW SLOT T-BAR



MFTG9 MiniFlange 9/16" T-TEGULAR



MFTG15 MiniFlange 15/16" TEGULAR

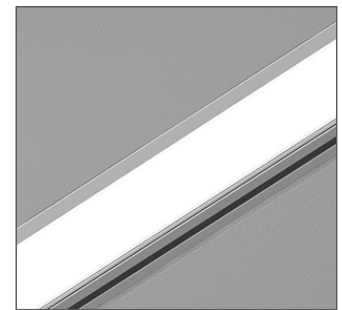


MiniFlange

Integrated MiniFlange (patent pending)

When installed along T-bars in acoustic ceilings, the Integrated MiniFlange supports adjacent ceiling tiles. At the same time, it **eliminates the need for a second T-bar**. This feature comes standard on Sculpt Recessed.

- Fewer materials needed and less labor.
- Conceals ceiling tile cutline for a cleaner appearance.
- Simplifies drawings and trade coordination.
- Available in different T-bar profiles.

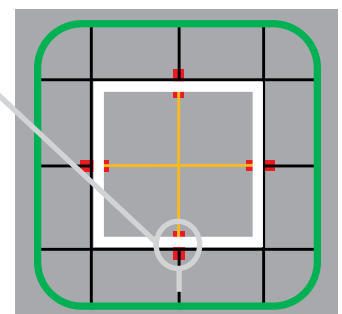


With Integrated MiniFlange

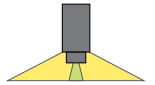
The T-Aligner™ (patent pending)

- Foolproof solution for a perfectly aligned ceiling grid.
- Connects cut T-bars on either side of a Sculpt luminaire or ceiling kit.
- No need to specify – Comes standard with Sculpt Recessed.
- Compatible with all T-bar profiles including slot and Tegular (9/16" and 15/16").

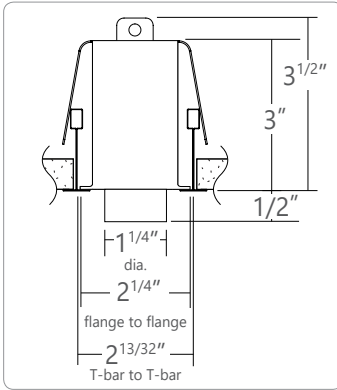
T-Aligners are installed where T-bars intersect the luminaire or ceiling kit.



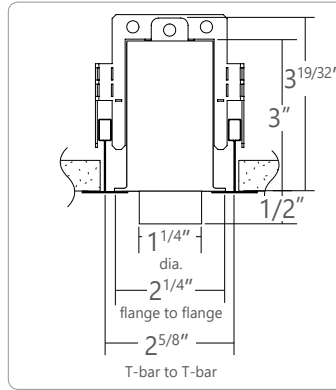
View from above ceiling



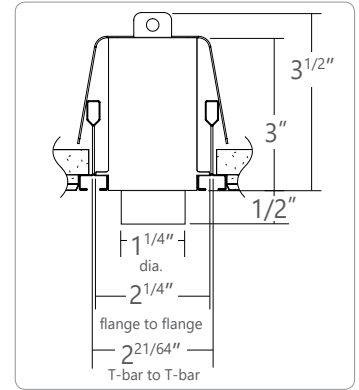
STANDARD T-BAR CEILING MOUNTING OPTIONS



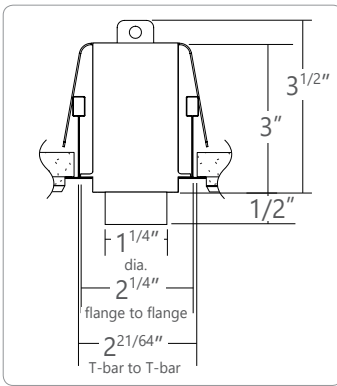
TB9 9/16" T-BAR



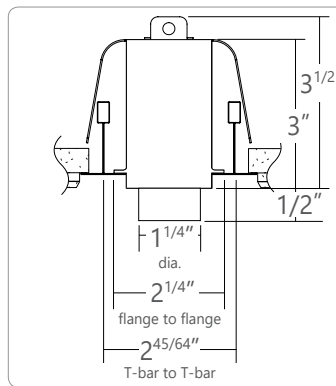
TB15 15/16" T-BAR



ST SCREW SLOT T-BAR

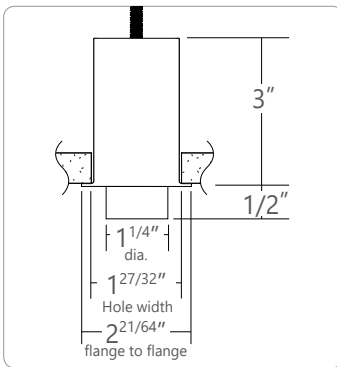


TG9 9/16" T-TEGULAR

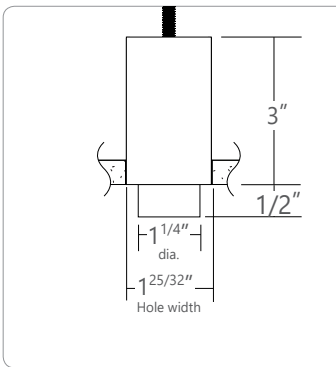


TG15 15/16" TEGULAR

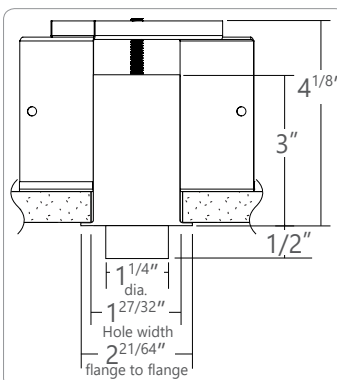
DRYWALL CEILING MOUNTING OPTIONS



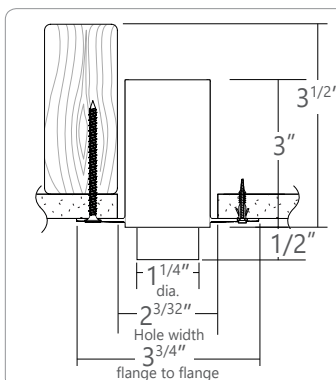
DF VISIBLE FLANGES WITH 1/4-20 STUD MOUNTING



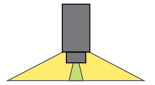
D FLANGELESS WITH 1/4-20 STUD MOUNTING



DB SLIP-THROUGH BRACKET

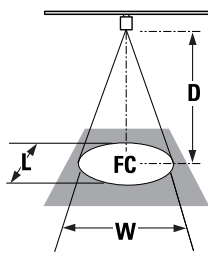


DS DRYWALL SPACKLE FLANGE

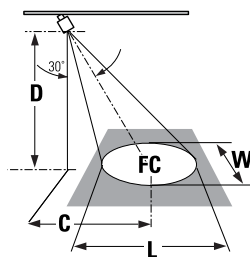


PHOTOMETRIC DATA FOR ACCENT

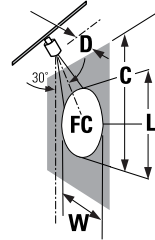
L = Beam Length
 W = Beam Width
 D = Distance
 C = Distance to Center Beam
 A = Aiming Angle
 FC = Foot Candle



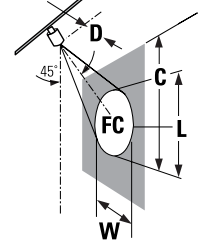
0° horizontal aiming angle



30° horizontal aiming angle



30° vertical aiming angle



45° vertical aiming angle

| Beam Spread | CBCP | Rated Life (hrs.) | 0° horizontal aiming angle | | | 30° horizontal aiming angle | | | 30° vertical aiming angle | | | 45° vertical aiming angle | | | | | | | | | | |
|-------------|---------|-------------------|----------------------------|---|----|-----------------------------|------|----|---------------------------|----|-------|---------------------------|----|------|------|-------|------|----|----|-------|------|------|
| | | | D | C | FC | L | W | D | C | FC | L | W | D | C | FC | L | W | | | | | |
| 24° | 2287 cd | 50,000 L70 | 5' | 0 | 83 | 2.1' | 2.1' | 2' | 2.8' | 54 | 2.9' | 2.4' | 2' | 3.4' | 67 | 3.9' | 1.6' | 2' | 2' | 185 | 1.7' | 1.1' |
| | | | 6' | 0 | 57 | 2.5' | 2.5' | 3' | 3.4' | 37 | 3.4' | 2.9' | 3' | 5.1' | 29 | 5.8' | 2.5' | 3' | 3' | 80 | 2.6' | 1.7' |
| | | | 7' | 0 | 42 | 2.9' | 2.9' | 4' | 4' | 27 | 4' | 4.4' | 4' | 6.9' | 16.4 | 7.8' | 3.3' | 4' | 4' | 53 | 3.5' | 2.3' |
| | | | 8' | 0 | 32 | 3.4' | 3.4' | 5' | 4.5' | 21 | 4.6' | 3.9' | 5' | 8.5' | 11 | 9.8' | 4.2' | 5' | 5' | 28 | 4.4' | 3' |
| 36° | 796 cd | 50,000 L70 | 5' | 0 | 29 | 3.2' | 3.2' | 2' | 2.8' | 19 | 4.4' | 3.7' | 2' | 3.4' | 23 | 7.5' | 2.5' | 2' | 2' | 64 | 2.8' | 1.8' |
| | | | 6' | 0 | 20 | 3.8' | 3.8' | 3' | 3.4' | 13 | 5.3' | 4.4' | 3' | 5.3' | 10 | 11.3' | 3.8' | 3' | 3' | 28 | 4.3' | 2.7' |
| | | | 7' | 0 | 15 | 4.5' | 4.5' | 4' | 4' | 9 | 6.2' | 5.2' | 4' | 6.9' | 6 | 15.3' | 5.3' | 4' | 4' | 19 | 5.7' | 3.6' |
| | | | 8' | 0 | 11 | 5.3' | 5.3' | 5' | 4.5' | 7 | 7.3' | 6' | 5' | 8.5' | 4 | 19' | 6.5' | 5' | 5' | 10 | 4.9' | 4.5' |
| 60° | 446 cd | 50,000 L70 | 5' | 0 | 16 | 5.7' | 5.7' | 2' | 2.8' | 11 | 8.5' | 6.6' | 2' | 3.4' | 13 | 4.5' | 2' | 2' | 36 | 6.9' | 3.4' | |
| | | | 6' | 0 | 11 | 6.9' | 6.9' | 3' | 3.4' | 7 | 10.3' | 7.9' | 3' | 5.3' | 6 | 6.9' | 3' | 3' | 16 | 10.3' | 4.8' | |
| | | | 7' | 0 | 8 | 8' | 8' | 4' | 4' | 5 | 12' | 9.3' | 4' | 6.9' | 3 | 9.2' | 4' | 4' | 11 | 13.8' | 6.5' | |
| | | | 8' | 0 | 6 | 9.7' | 9.7' | 5' | 4.5' | 4 | 13.8' | 10.6' | 5' | 8.5' | 2 | 11.5' | 5' | 5' | 6 | 17' | 8' | |

