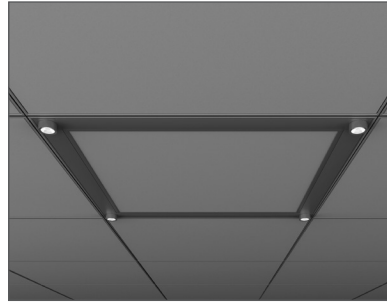


Linear option shown



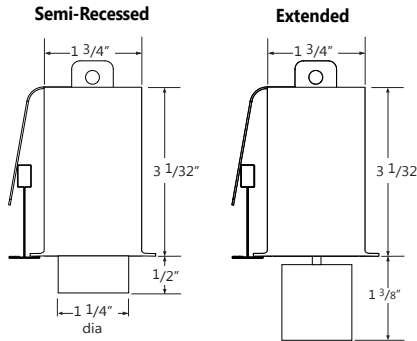
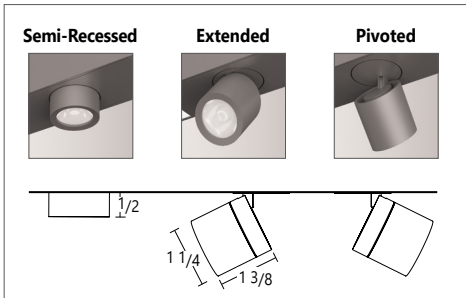
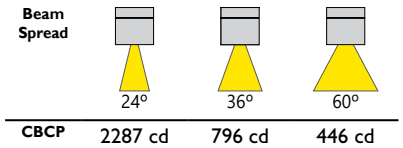
Kit option shown

Project _____

Type _____

Notes _____

PERFORMANCE



Ordering Guide

A configuration drawing is required

See page 7

SCRAC		ACCENT QTY		BEAM		SHIELDING (OPTIONAL)		DRIVER	
SCRAC	PRODUCT ID Sculpt Recessed with Accent LED	AC(#)	Accent quantity	D24	24 deg	HX	hexcell	D	dimming (0-10V) 10%
				D36	36 deg				
				D60	60 deg				
				CBS	custom beam spreads ⁽¹⁾				
				<small>(1) All Accents on a module will have the same beam spread. Consult factory for custom beam spreads arrangements. Final beam spread arrangements will be specified on shop drawings.</small>		1/8" extended insert			

CHANNEL COVER		CRI		COLOR TEMP.		LINEAR LENGTH OR CEILING KIT (select one)				FINISH	
CC	with channel cover	80	80 CRI	27	2700 K	2	2'	L	L shape 2' ⁽²⁾	AP	aluminum paint
WCC	without channel cover	90	90 CRI	30	3000 K	3	3'	U	U shape 2' ⁽²⁾	W	white
				35	3500 K	4	4'	2x2	2'x2' ⁽²⁾	BLK	black
				40	4000 K	6	6'	2x4	2'x4' ⁽²⁾		
						8	8'	2x6	2'x6' ⁽²⁾		
						12	12'	2x8	2'x8' ⁽²⁾		
						S#	System Run	2x10	2'x10' ⁽²⁾		
								2x12	2'x12' ⁽²⁾		
								4x4	4'x4' ⁽²⁾		
								K(#)	Other kits ⁽²⁾		
<small>Available with or without channel cover; See page 2 for more details * Fixture comes in black only</small>				<small>(2) Available as kit; Sculpt accommodates any length. Metric lengths also available, please consult factory.</small>							

VOLTAGE		CIRCUITS		MOUNTING/SUSPENSION				CUSTOM (OPTIONAL)	
120	120 V	1	1 circuit	MFTB9	MiniFlange t-bar 9/16" ⁽³⁾	ST	screw slot t-bar	C	custom
277	277 V			MFTB15	MiniFlange t-bar 15/16" ⁽³⁾	TG9	tegarular 9/16"		
UNV	universal			MFST	MiniFlange screw slot t-bar ⁽³⁾	TG15	tegarular 15/16"		
				MFTG9	MiniFlange 9/16" t-tegarular ⁽³⁾	DF	drywall flange		
				MFTG15	MiniFlange 15/16" t-tegarular ⁽³⁾	D	drywall flangeless		
				TB9	t-bar 9/16"	DB	slip-through bracket		
				TB15	t-bar 15/16"	DS	drywall spackle flange		
<small>(3) Must select from these options when ordering kits. See page 3 for more details</small>								Please specify	



LED SYSTEM

CRI	Minimum 80 or 90 color rendering index
CCT	3000K color temperature with a great color consistency (within 3.0-step MacAdam ellipse).
LED life	Minimum 50,000h with 70% of lumen maintenance in 25°C ambient temperature, in compliance with IES LM-80 testing measurements.
Thermal Management	Aluminum housing acting as the heat sink to maximize life.

CONSTRUCTION

Housing	Extruded aluminum (0.080" nominal) up to
End Cap	Die cast aluminum
Interior Brackets	Die formed sheet steel (20 gauge)
Hanger	Die cast aluminum
Suspension	Sliding aircraft cable along product length
Cable Grips	Quick connecting / release

ELECTRICAL

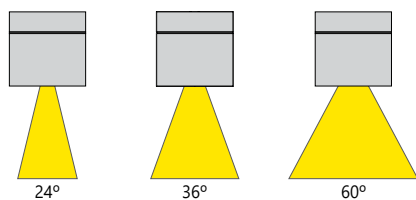
Input Voltage 120V, 277V, UNV.

i Incorporating these components may have limitations or affect the length of the luminaire. Please contact factory for more details.

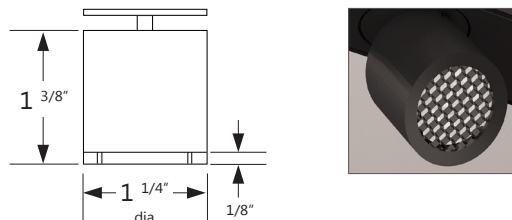
WARRANTY

Axis lighting will warrant defective LEDs, boards, and drivers for 5 years from date of purchase. Warranty is valid if luminaire is installed and used according to specifications. If defective, Axis will send replacement boards or drivers at no cost along with detailed replacement instructions and instructions on how to return defective components to Axis.

BEAM SPREADS



HEXCELL SHIELDING OPTIONS



SAFETY NOTE

Although Accent lamps operate at cooler temperatures than halogen lamps, it is recommended that gloves be worn when adjusting Accents that have been energized.

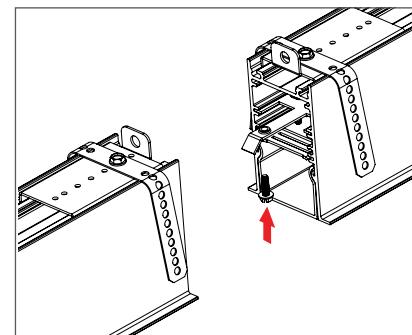
*Patent Number: 9416535 B1

WEIGHT

4 ft	8 lbs / 3.6 kg
8 ft	16 lbs / 7.3 kg
12 ft	24 lbs / 10.9 kg

JOINERS


In order to allow very long runs of SCULPT luminaires, Axis has developed an effective joining system. Special care has been taken to maximize the performance of the joiner for each SCULPT option.



NOTE: Mount each system segment individually. Do not assemble system prior to mounting.

i Allow a minimum of 6" between end of long runs and vertical wall

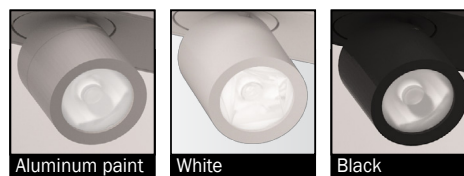
APPROVALS

Certified to UL and CUL standards  Suitable for damp locations.

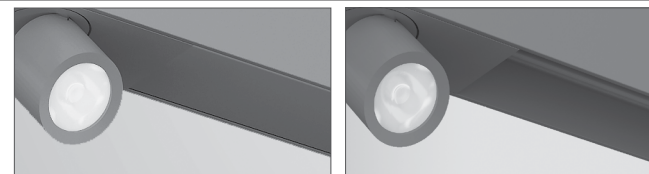
SYSTEM (S#)

SCULPT linear systems, with the use of a strong profile, allow for a nearly hair thin connection system of continuous runs. Lengths of 4', 8', 12' as well as custom lengths are available. Runs of SCULPT that are greater than 12' in length are designated as systems (S#). This means that the run is comprised of a combination of 4', 8' and/or 12' sections to be assembled on site using our joining system. For more information on systems and joining, please refer to the SCULPT installation sheets available for download at www.axislighting.com.

FINISHES



CHANNEL COVER OPTIONS

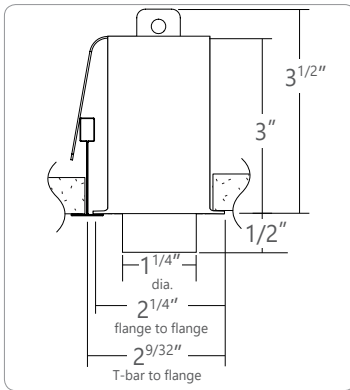


With channel cover

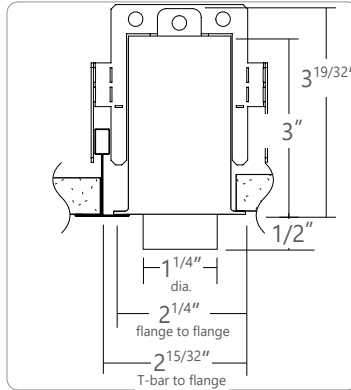
Without channel cover



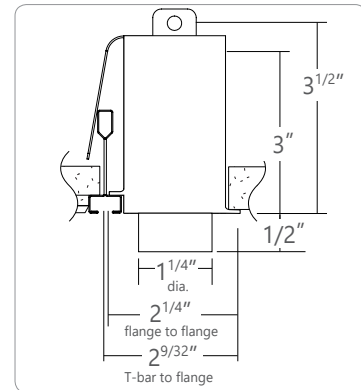
● KIT AND LINEAR - WITH INTEGRATED



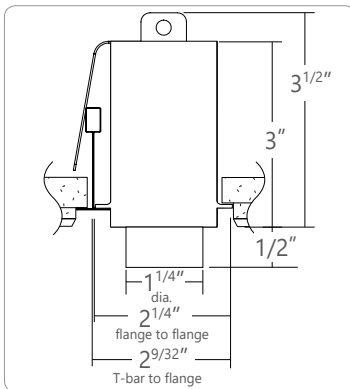
MFTB9 MiniFlange 9/16" T-BAR



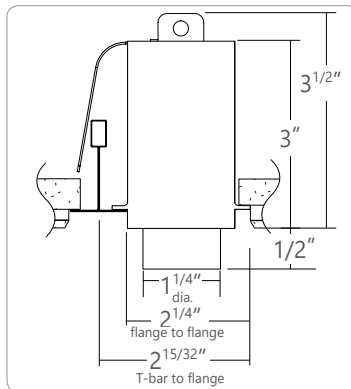
MFTB15 MiniFlange 15/16" T-BAR



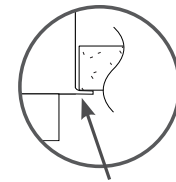
MFST MiniFlange SCREW SLOT T-BAR



MFTG9 MiniFlange 9/16" T-TEGULAR



MFTG15 MiniFlange 15/16" TEGULAR

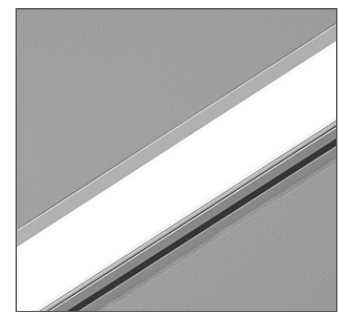


MiniFlange

Integrated MiniFlange (patent pending)

When installed along T-bars in acoustic ceilings, the Integrated MiniFlange supports adjacent ceiling tiles. At the same time, it **eliminates the need for a second T-bar**. This feature comes standard on Sculpt Recessed.

- Fewer materials needed and less labor.
- Conceals ceiling tile cutline for a cleaner appearance.
- Simplifies drawings and trade coordination.
- Available in different T-bar profiles.

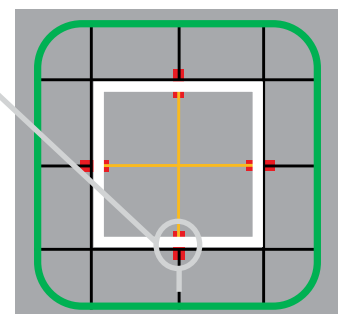


With Integrated MiniFlange

The T-Aligner™ (patent pending)

- Foolproof solution for a perfectly aligned ceiling grid.
- Connects cut T-bars on either side of a Sculpt luminaire or ceiling kit.
- No need to specify – Comes standard with Sculpt Recessed.
- Compatible with all T-bar profiles including slot and Tegular (9/16" and 15/16").

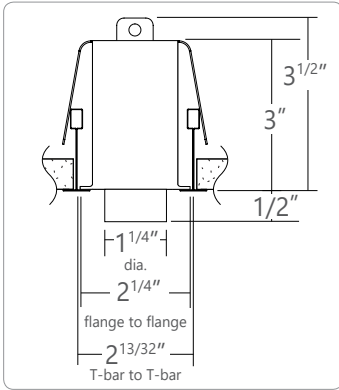
T-Aligners are installed where T-bars intersect the luminaire or ceiling kit.



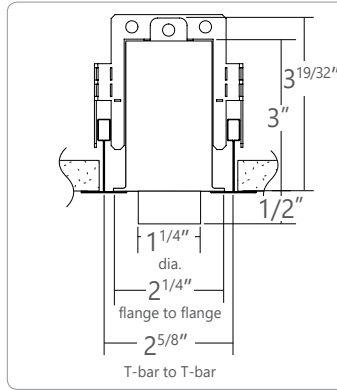
View from above ceiling



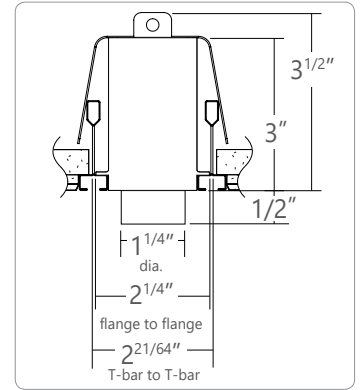
STANDARD T-BAR CEILING MOUNTING OPTIONS



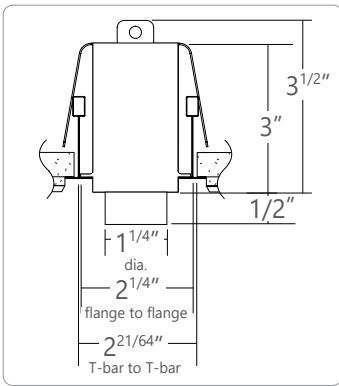
TB9 9/16" T-BAR



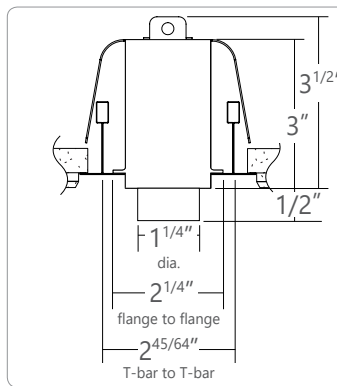
TB15 15/16" T-BAR



ST SCREW SLOT T-BAR

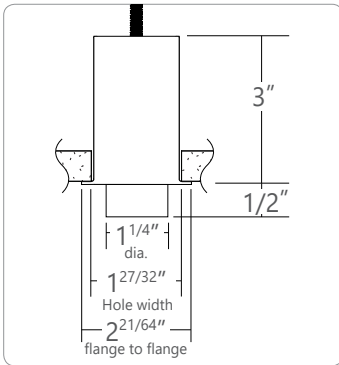


TG9 9/16" T-TEGULAR

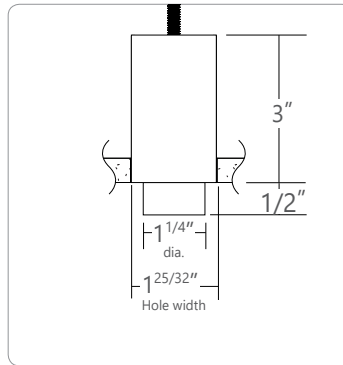


TG15 15/16" TEGULAR

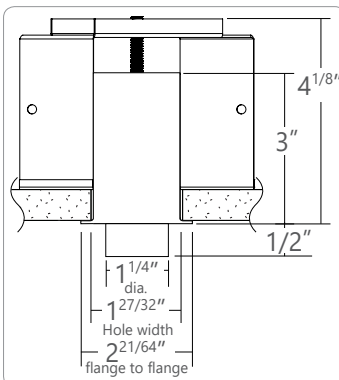
DRYWALL CEILING MOUNTING OPTIONS



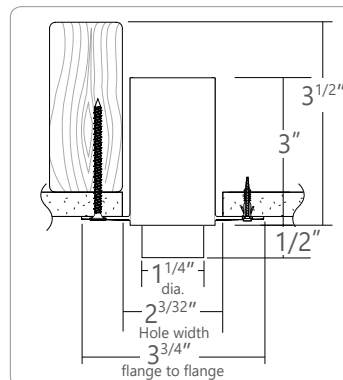
DF VISIBLE FLANGES WITH 1/4-20 STUD MOUNTING



D FLANGELESS WITH 1/4-20 STUD MOUNTING



DB SLIP-THROUGH BRACKET

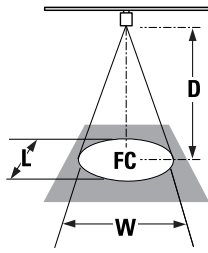


DS DRYWALL SPACKLE FLANGE

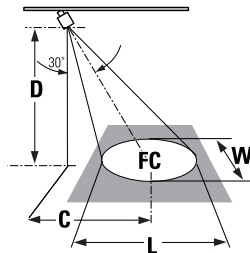


PHOTOMETRIC DATA FOR ACCENT

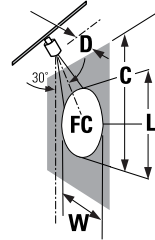
L = Beam Length
 W = Beam Width
 D = Distance
 C = Distance to Center Beam
 A = Aiming Angle
 FC = Foot Candle



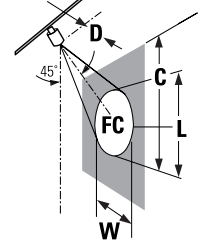
0° horizontal aiming angle



30° horizontal aiming angle



30° vertical aiming angle



45° vertical aiming angle

Beam Spread	CBCP	Rated Life (hrs.)	0° horizontal aiming angle					30° horizontal aiming angle					30° vertical aiming angle					45° vertical aiming angle				
			D	C	FC	L	W	D	C	FC	L	W	D	C	FC	L	W	D	C	FC	L	W
24°	2287 cd	50,000 L70	5'	0	83	2.1'	2.1'	2'	2.8'	54	2.9'	2.4'	2'	3.4'	67	3.9'	1.6'	2'	2'	185	1.7'	1.1'
			6'	0	57	2.5'	2.5'	3'	3.4'	37	3.4'	2.9'	3'	5.1'	29	5.8'	2.5'	3'	3'	80	2.6'	1.7'
			7'	0	42	2.9'	2.9'	4'	4'	27	4'	4.4'	4'	6.9'	16.4	7.8'	3.3'	4'	4'	53	3.5'	2.3'
			8'	0	32	3.4'	3.4'	5'	4.5'	21	4.6'	3.9'	5'	8.5'	11	9.8'	4.2'	5'	5'	28	4.4'	3'
36°	796 cd	50,000 L70	5'	0	29	3.2'	3.2'	2'	2.8'	19	4.4'	3.7'	2'	3.4'	23	7.5'	2.5'	2'	2'	64	2.8'	1.8'
			6'	0	20	3.8'	3.8'	3'	3.4'	13	5.3'	4.4'	3'	5.3'	10	11.3'	3.8'	3'	3'	28	4.3'	2.7'
			7'	0	15	4.5'	4.5'	4'	4'	9	6.2'	5.2'	4'	6.9'	6	15.3'	5.3'	4'	4'	19	5.7'	3.6'
			8'	0	11	5.3'	5.3'	5'	4.5'	7	7.3'	6'	5'	8.5'	4	19'	6.5'	5'	5'	10	4.9'	4.5'
60°	446 cd	50,000 L70	5'	0	16	5.7'	5.7'	2'	2.8'	11	8.5'	6.6'	2'	3.4'	13		4.5'	2'	2'	36	6.9'	3.4'
			6'	0	11	6.9'	6.9'	3'	3.4'	7	10.3'	7.9'	3'	5.3'	6		6.9'	3'	3'	16	10.3'	4.8'
			7'	0	8	8'	8'	4'	4'	5	12'	9.3'	4'	6.9'	3		9.2'	4'	4'	11	13.8'	6.5'
			8'	0	6	9.7'	9.7'	5'	4.5'	4	13.8'	10.6'	5'	8.5'	2		11.5'	5'	5'	6	17'	8'

