

Start an itinerary by clicking here or alternatively just click one of the Add to Itinerary buttons to initiate the process.

Clicking expands status panel (animated to slide open)

This text displays when the user has not yet started an itinerary

Milepost for this town on this route

Clicking "Add to Itinerary" scrolls page to top and expands status panel (animated to slide open)

Button disabled until checkbox is checked

Click on status bar at any time and the panel will expand, forcing the rest of the page content down the page, to display full details of your itinerary so far or to prompt you to start one

**DESIGN NOTES**

- Few or no icons
- White background
- Clean and modern design and don't want all the little icons
- Modern and "smart" typography

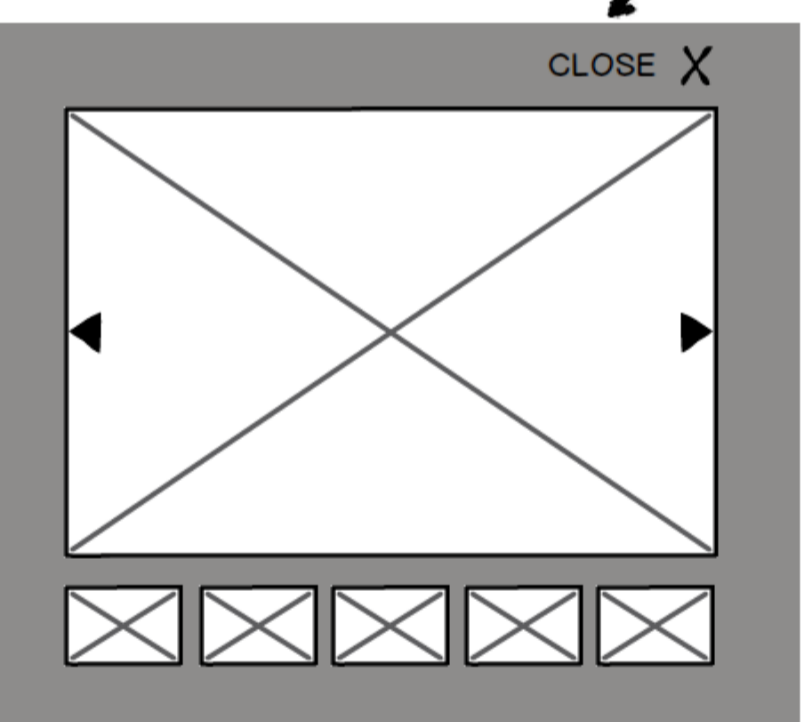
**FOR REFERENCE**

Travel/leisure sites with bold banner images, and image-boxes for links to the main areas of the website, or to get started on a particular journey through the site

- https://www.exodus.co.uk/
- https://www.macsadventure.com
- https://www.nationalrail.co.uk/
- https://www.greatenglishtrails.com/
- https://www.clubmed.co.uk/
- https://www.skiclub.co.uk/
- https://www.simpsonstravel.com/
- https://www.visitscotland.com/
- https://www.nationaltrust.org.uk/

Click to open larger version in modal window with thumbnail gallery - "close" button in top right

CLOSE X



Check that postcode is a valid format. For example, CA27 0BN is valid but CA27 269 is invalid.

Validation script can be found here:  
UK Postcode Validation

My Itinerary No. of days: 0 / No. in party: 0 / Total Bags: 0 / Estimated cost: £0.00 Ready to get started? Let's go!

Sherpa Van takes all the hassle out of organising your walking holiday. Simply tell us where you'd like to stay each night, and we do the rest. We pick up your bags each morning and drop them off at your destination. If you like, we'll even book and confirm all your accommodation for you, too. To get started just choose from the available accommodation and click Add to Itinerary.

Coast to Coast Mile 1

### St Bees

4 miles south of the port of Whitehaven, St Bees is a village which extends inland from a broad sandy beach, popular with local trippers, and the tall red cliffs of St Bees Head, a well-known reserve for seabirds. The historic abbey is now incorporated in St Bees School. There are several inns and small shops on the main street which runs uphill from the train station. You can obtain groceries from Mitchell's Grocery Store opening at 8.00am daily except Sunday, closing at 8.00pm Monday to Thursday, 7.00pm Friday and 6pm Saturday and at Milepost 3 there is a small grocery shop.

**Tomlin Guest House**  
Beach Road, St. Bees Cumbria CA27 0EN

We have been welcoming guests to our home at Tomlin House for over 13 years. A small, friendly guesthouse near the beach which was originally a comfortable Victorian house. Situated only half a mile from the railway station and the centre of the village, car parking is available for the duration of your walk. Four comfortable rooms, two are ensuite and two have shared facilities. Full service breakfast is offered with vegetarian and healthy options. TV, tea/coffee WiFi available in all rooms. Packed lunches made to order.

Property type: Guesthouse  
Distance from path: 1/4 mile  
OS reference: 963118

Further info  
Situated very close to the Main beach, they are in an ideal position for those setting out on the Walk, if you wish to leave your car whilst on the Walk, they can offer a lockup garage or off-road parking at a small cost of £2 per night.

01946 822284  
Send an email  
Map view

Add to Itinerary

**Stonehouse Farm**  
133 Main Street, St. Bees Cumbria CA27 0DE

Stonehouse Farm is run by Carole Smith. Warm, friendly atmosphere in comfortable modern Georgian farmhouse, situated in centre of village, 30 metres from railway station and nearby pubs serving meals and bar meals, and 150 metres from village shops. All rooms are en suite and centrally heated. All have TV & Tea/Coffee making facilities. Long stay Coast to Coast parking. Camping facilities also available (£5.00 per night) Long Stay Car Parking from £3.00 per night. Luggage drop off point before 8.30 am if you are not staying in St. Bees - £2.50 per bag for this service payable to Stonehouse Farm.

Property type: Farmhouse B & B  
Distance from path: On route  
OS reference: 971119

Further info  
30 yards from the railway station in St Bees main street.

01946 822224  
Visit website  
Send an email  
Map view

Add to Itinerary

**The Manor**  
Main Street, St. Bees Cumbria CA27 0DE

The Manor is a well situated, comfortable country inn, providing high quality food and en-suite accommodation. A flat-screen TV and tea and coffee making facilities are provided in each traditionally furnished room. All rooms also have a private bathroom with a bath or shower and a selection of toiletries. The 17th Century Inn serves a variety of real ales and is Cask Marque awarded. It also offers a private beer garden and a sports bar with a pool table, juke box and a large flat screen TV with sky & BT Sports available. The Manor has a lounge bar and a restaurant serving a variety of traditional home-cooked food throughout the day. Full English breakfasts are served in the restaurant. Packed lunches are available on request. Free private parking, secure bicycle storage and free wi-fi are all available at The Manor. Scenic walks can be enjoyed less than 15 minutes' drive away in the Lake District National Park. The Manor is situated in the heart of the beautiful seaside village of St Bees. Our location is ideal for the start of the Coast to Coast walk which leaves from the beach. St Bees Head is just a 5-minute drive away and offers beautiful coastal walks. Ravenglass and Eskdale Miniature Steam Railway and Muncaster Castle are both within 25 minutes' drive of The Manor. For more information visit www.manorhousestbees.co.uk

Property type: Country Inn (Pub)  
Distance from path: On route

01946 820587  
Visit website  
Send an email  
Map view

Add to Itinerary

**Albert Hotel**  
Finkle Street, St. Bees Cumbria CA27 0BN

A small family run business with friendly atmosphere. All rooms refurbished in 2011. The nearest Hotel from the Train Station. All rooms have recently been upgraded. Double, twin and single rooms are available with full English breakfast, most are en-suite and have T.V tea/coffee, toiletries, ironing and hairdrying facilities. Smokers and non-smokers catered for. Other facilities include Bar, Beer garden, games room and entertainment most weekends. Nearest hotel to bus and train stops. 7 minutes from the beach (when walking). Lock-up for bikes. CCTV. A free bottle of wine for anyone eating at the Albert. Wi Fi is now available. Packed lunches available for £4.00.

Property type: Guesthouse  
Distance from path: On route  
OS reference: 971119

Further info  
Please book evening meals in advance.

01946 822345  
Send an email  
Map view

Add to Itinerary

**Your Own Accommodation**

If you have accommodation already arranged in St. Bees, please enter the details below so that we can arrange baggage transfer. You will be charged a luggage delivery fee but you will not be charged a booking fee for this stop.

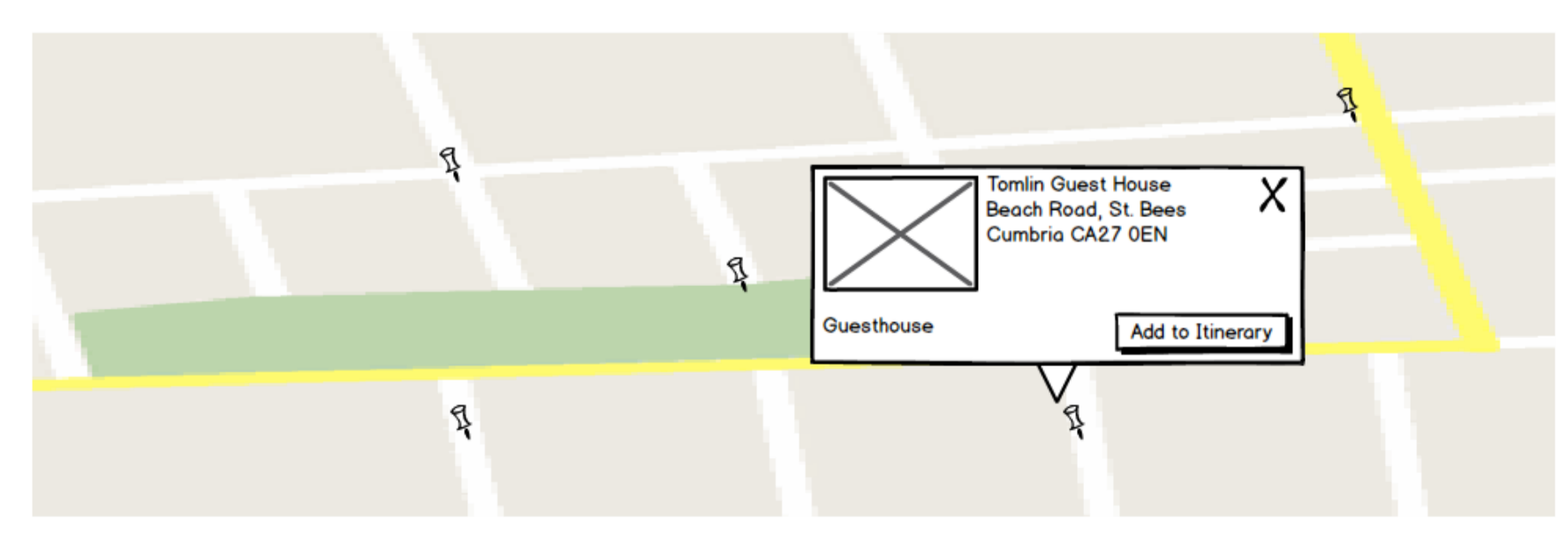
Contact Tel:

Address:

Postcode:

Please check this box to confirm that our driver will have access for bag collection and drop off

Add to Itinerary



St Bees - Coast to Coast - Sherpa Van Luggage & Accommodation for Walking Holidays

https://www.sherpavan.com/coast-to-coast/st-bees

My Itinerary

Home / Routes / How it Works / Articles / Luggage Service / Accommodation Service / About Us / Contact Us

My Itinerary No. of days: 0 / No. in party: 0 / Total Bags: 0 / Estimated cost: £0.00

**You've Started Creating Your Coast to Coast Itinerary!**

Before you go any further, please tell us a few things about your trip. If you change your mind later, you can come back to these choices by clicking My Itinerary any time.

Would you like Sherpa to...?

Transfer your luggage

Transfer your luggage and book your accommodation

Will you be...?

Cycling

Walking

Running

Start date

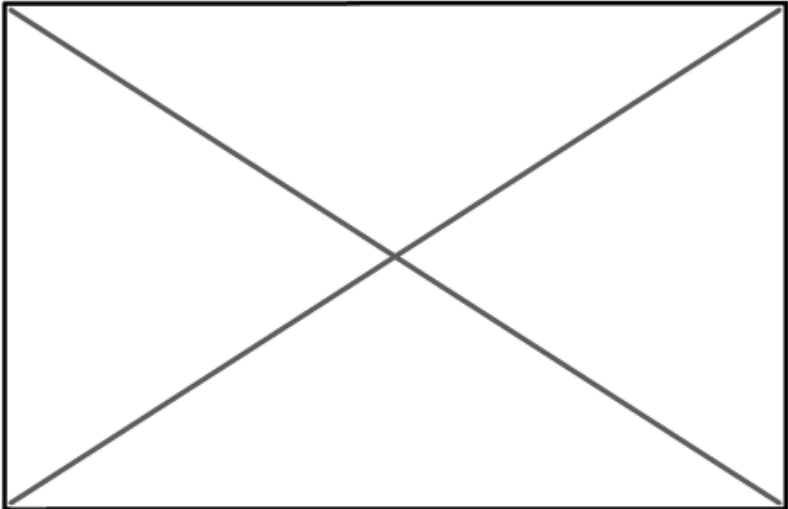
Total people in your party

Total bags to be transferred

Coast to Coast Mile 1

## St Bees

4 miles south of the port of Whitehaven, St Bees is a village which extends inland from a broad sandy beach, popular with local trippers, and the tall red cliffs of St Bees Head, a well-known reserve for seabirds. The historic abbey is now incorporated in St Bees School. There are several inns and small shops on the main street which runs uphill from the train station. You can obtain groceries from Mitchell's Grocery Store opening at 8.00am daily except Sunday, closing at 8.00pm Monday to Thursday, 7.00pm Friday and 6pm Saturday and at Milepost 3 there is a small grocery shop.



"Articles" section comprising news and editorial - final title TBC

This is the "Status Panel". It expands to show a wizard for starting an itinerary or at any point to display the itinerary.

If accommodation booking is selected, ask for accommodation preferences in next step, otherwise skip ahead to the following step

VALIDATION: Date must be at least three weeks ahead of current date and must be between the annual route start date and route end date.

VALIDATION: Minimum of 1

VALIDATION: Each route has a minimum number of bags per party, for example 1 per person



My Itinerary

Home / Routes / How it Works / Articles / Luggage Service / Accommodation Service / About Us / Contact Us

My Itinerary No. of days: 0 / No. in party: 2 / Total Bags: 3 / Estimated cost: £0.00 Now booking: Luggage and accommodation: Coast to Coast WALKING

### Now booking Coast to Coast luggage transfers and accommodation

Please enter the room requirements for your trip. We will endeavour to book what you have requested, but where there is no availability we will substitute comparable alternative accommodation.

0 Single rooms

\* With ensuite bathroom?

0 Double rooms

\* With ensuite bathroom?

0 Twin rooms

\* With ensuite bathroom?

\* if available

Family Room where available

Some hotels and guesthouses allow parties of three or more adults to use 'family rooms' - if you would like us to try and book a family room where available then please check this box

#### General Preferences

For example: vegetarian meals

Next »

Status bar gets populated with (a) type of booking (luggage & accommodation or just luggage), route name and method of travel (walking/cycling) plus running totals.

This looks a bit crowded, so possibly we need to show less information or just expand the height of the status bar

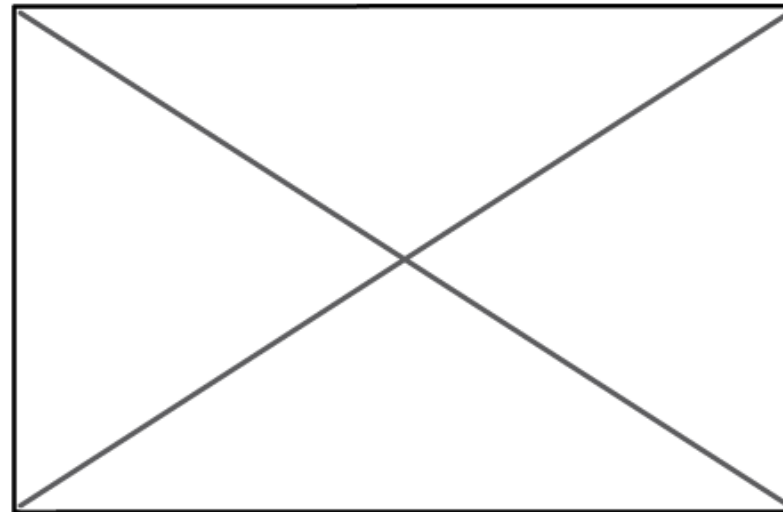
This step in the wizard only appears for accommodation bookings. If luggage-only, skip to next step

Coast to Coast

Mile 1

## St Bees

4 miles south of the port of Whitehaven, St Bees is a village which extends inland from a broad sandy beach, popular with local trippers, and the tall red cliffs of St Bees Head, a well-known reserve for seabirds. The historic abbey is now incorporated in St Bees School. There are several inns and small shops on the main street which runs uphill from the train station. You can obtain groceries from Mitchell's Grocery Store opening at 8.00am daily except Sunday, closing at 8.00pm Monday to Thursday, 7.00pm Friday and 6pm Saturday and at Milepost 3 there is a small grocery shop.





My Itinerary

Home / Routes / How it Works / Articles / Luggage Service / Accommodation Service / About Us / Contact Us

My Itinerary No. of days: 0 / No. in party: 2 / Total Bags: 3 / Estimated cost: £0.00 Now booking: Luggage and accommodation: Coast to Coast WALKING

### Now booking Coast to Coast luggage transfers and accommodation

ADD TO ITINERARY

Tomlin Guest House  
Beach Road, St. Bees Cumbria CA27 0EN

MILE 1

Arrival date

Special requirements

For example: vegetarian meals

Departure date

#### CANCELLATIONS

Please note: should you fail to check in, you will be liable for any applicable cancellation charges levied by the hotel proprietor.

Please note that we reserve the right to book a reasonable alternative in case your requirements are unavailable.

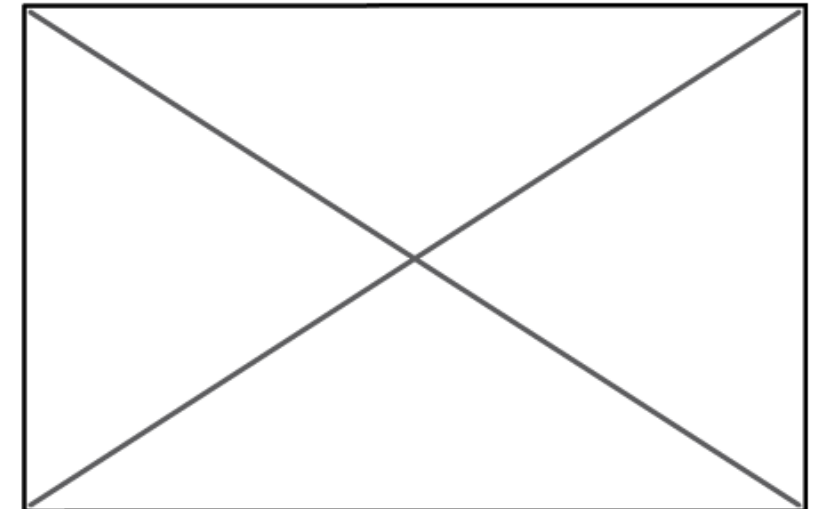
Next »

## Coast to Coast

Mile 1

# St Bees

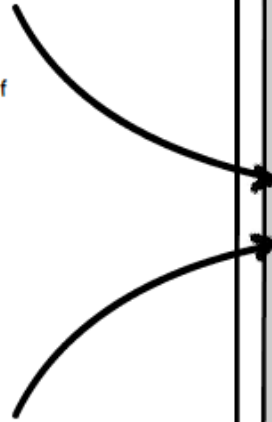
4 miles south of the port of Whitehaven, St Bees is a village which extends inland from a broad sandy beach, popular with local trippers, and the tall red cliffs of St Bees Head, a well-known reserve for seabirds. The historic abbey is now incorporated in St Bees School. There are several inns and small shops on the main street which runs uphill from the train station. You can obtain groceries from Mitchell's Grocery Store opening at 8.00am daily except Sunday, closing at 8.00pm Monday to Thursday, 7.00pm Friday and 6pm Saturday and at Milepost 3 there is a small grocery shop.



Default arrival date  
If this is the first stop on the itinerary, set arrival date to the itinerary start date.  
If there are already stops on the itinerary, calculate date based on distance from previous milepost.  
If previous milepost was less than 30 miles, default arrival date = departure date of previous stop  
If previous milepost was more than 30 miles, add 1 day for every 15 miles (the time it would take an average walker to get there)  
eg. 3 days to go 45 miles at an average of 15 miles a day.  
So the default arrival date = departure date of previous stop + n days

For runners and cyclists, suggested distance is 30 miles per day.

Default departure date = default arrival date + 1 day



St Bees - Coast to Coast - Sherpa Van Luggage & Accommodation for Walking Holidays

https://www.sherpavan.com/coast-to-coast/st-bees

My Intinerary

Home / Routes / How it Works / Articles / Luggage Service / Accommodation Service / About Us / Contact Us

My Itinerary No. of days: 0 / No. in party: 2 / Total Bags: 3 / Estimated cost: £60.00 Now booking: Luggage and accommodation: Coast to Coast WALKING

**Now booking Coast to Coast luggage transfers and accommodation**

**MY ITINERARY**

MILE 1 Tomlin Guest House, St. Bees Remove

<b>BOOKING FEES</b>	<b>LUGGAGE TRANSFER FEES</b>
For 2 people for 1 stop, the booking fee will be £30.00 per person, a total of £60.00.	£8.50 per bag per transfer. For 3 bags to be transferred 0 times, the charge will be £0.00.
£60.00.	£0.00.

**MY NEXT STOP - CHOOSE A DESTINATION:**

MILE 5	Sandwith
MILE 8	Egremont
MILE 9	Cleator
MILE 14	Ennerdale Bridge
MILE 23	YHA Black Sail
SHOW ALL TOWNS	»»»»

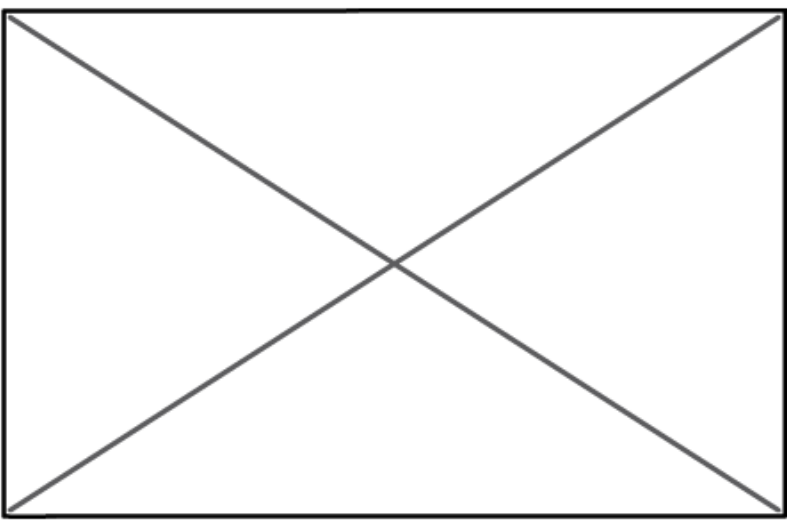
Save Itinerary ITINERARY COMPLETE? Checkout


---

Coast to Coast Mile 1

## St Bees

4 miles south of the port of Whitehaven, St Bees is a village which extends inland from a broad sandy beach, popular with local trippers, and the tall red cliffs of St Bees Head, a well-known reserve for seabirds. The historic abbey is now incorporated in St Bees School. There are several inns and small shops on the main street which runs uphill from the train station. You can obtain groceries from Mitchell's Grocery Store opening at 8.00am daily except Sunday, closing at 8.00pm Monday to Thursday, 7.00pm Friday and 6pm Saturday and at Milepost 3 there is a small grocery shop.



 **ITINERARY SUMMARY PANEL**  
 Clear summary of the itinerary and costs so far.  
 Once the itinerary is started, clicking the status bar above would display this panel

Clicking a town name moves you further along the route

Go to a list of all the towns on the route

Opens login/registration form

Nice, big checkout button!  
 Hard to miss!



My Itinerary

Home / Routes / How it Works / Articles / Luggage Service / Accommodation Service / About Us / Contact Us

My Itinerary No. of days: 0 / No. in party: 2 / Total Bags: 3 / Estimated cost: £60.00 Now booking: Luggage and accommodation: Coast to Coast WALKING

### Now booking Coast to Coast luggage transfers and accommodation

#### LOG IN

Email address

Password

[Forgot your password?](#)

Log In

#### REGISTER

First Name

Surname

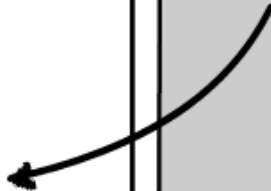
Email address

Password

Confirm Password

Register

Successful login returns user to Your Itinerary where they can choose the next town on their route



Coast to Coast

Mile 1

## St Bees

4 miles south of the port of Whitehaven, St Bees is a village which extends inland from a broad sandy beach, popular with local trippers, and the tall red cliffs of St Bees Head, a well-known reserve for seabirds. The historic abbey is now incorporated in St Bees School. There are several inns and small shops on the main street which runs uphill from the train station. You can obtain groceries from Mitchell's Grocery Store opening at 8.00am daily except Sunday, closing at 8.00pm Monday to Thursday, 7.00pm Friday and 6pm Saturday and at Milepost 3 there is a small grocery shop.

